

The State of Mexico has it all



GOBIERNO DEL
ESTADO DE
MÉXICO

DESARROLLO ECONÓMICO
SECRETARÍA DE DESARROLLO ECONÓMICO

State of Mexico, the State of opportunities

17.7

Million habitants

9.3

million inhabitants in
Mexico City



Together, they form the largest consumer market in the
country with **26.9 million consumers**

Economic strenghts



9.1%

contribution to **national Gross Domestic Product (GDP)**

9.6%

of the **national GDP** in the manufacturing industry

13.8%

national workforce participation

8.3%

in accumulated **Foreign Direct Investment (FDI)**

1^o place

in **Economic Units** with over 701 thousand, representing nearly 13% of the national total

13

years **without strikes** in the manufacturing sector.

Sources:

-ENOE-INEGI, II trimestre 2023; Secretaría del Trabajo y Previsión Social, 2023; Secretaría de Economía, 2006 - II Tim. 2024.

-Estadísticas Situación Laboral INEGI, 2022; Secretaría de Educación, Ciencia, Tecnología e

Connectivity to Infrastructure



More than 1,3 thousand km
Of railway tracks

More than 16 thousand km
Of road network

2 international airports
as part of the Metropolitan
Airport System (SAM),
along with AICM



Sources:

-INEGI-AEGEUM, 2022.

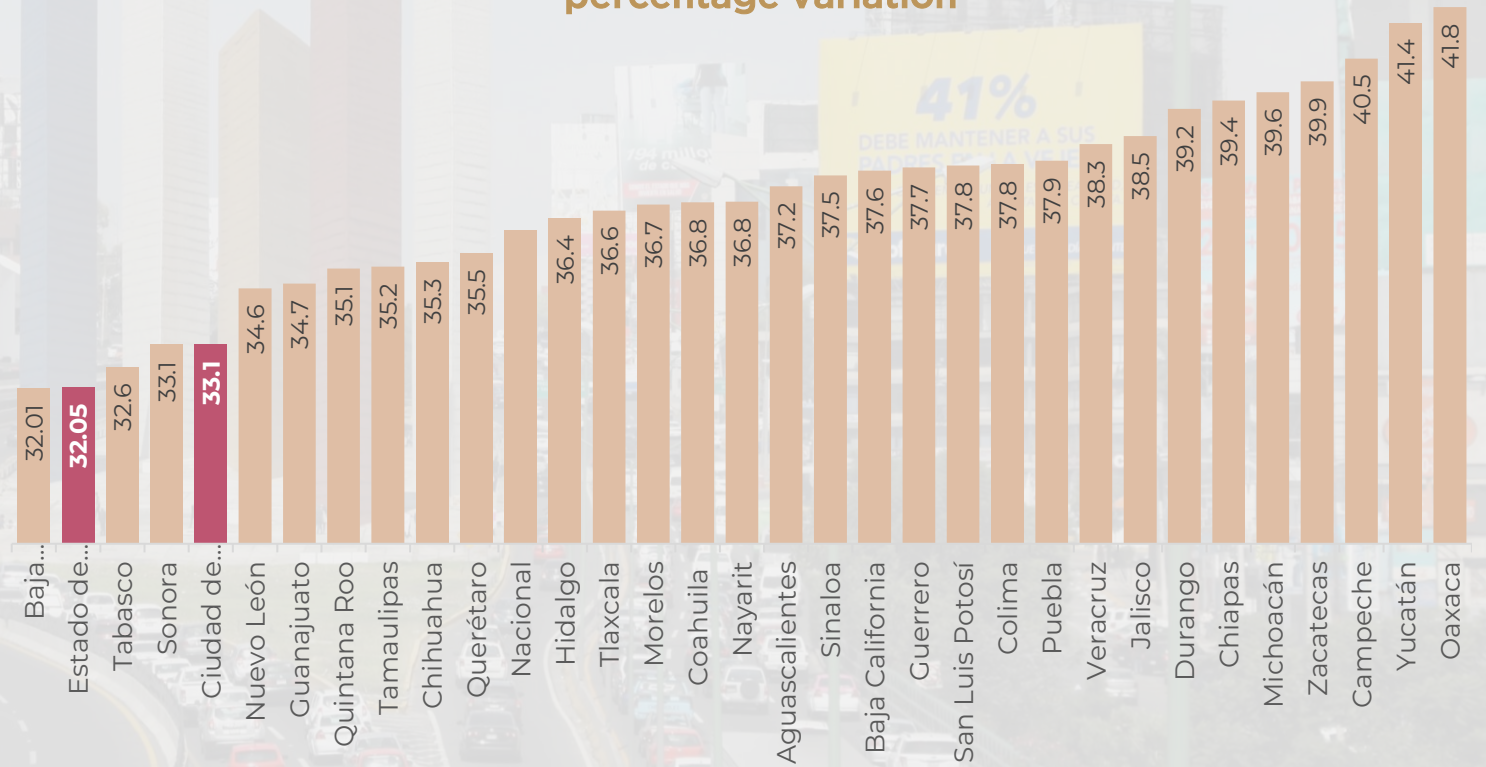
-SEDECO-GEM, 2023.

Price stability

We are the second economy with the greatest price stability in the country, having recorded the lowest cumulative inflation in the period from July 2028 to September 2024

74 months

Historical cumulative inflation,
august 2018 - september 2024,
percentage variation



Skilled workforce



8.2 million

people employed in our region, we have the largest labor force in the country

+ 4 million

students from basic to postgraduate level, we have the largest enrollment nationwide

3 thousand 460

institutions of higher and secondary education

2 mil 428

researchers from the National Researchers System (6% of the national total)

- Level 3: 78
- Level 2: 318
- Level 1: 1,408
- Candidate: 595
- Emeritus: 29

1.2 million

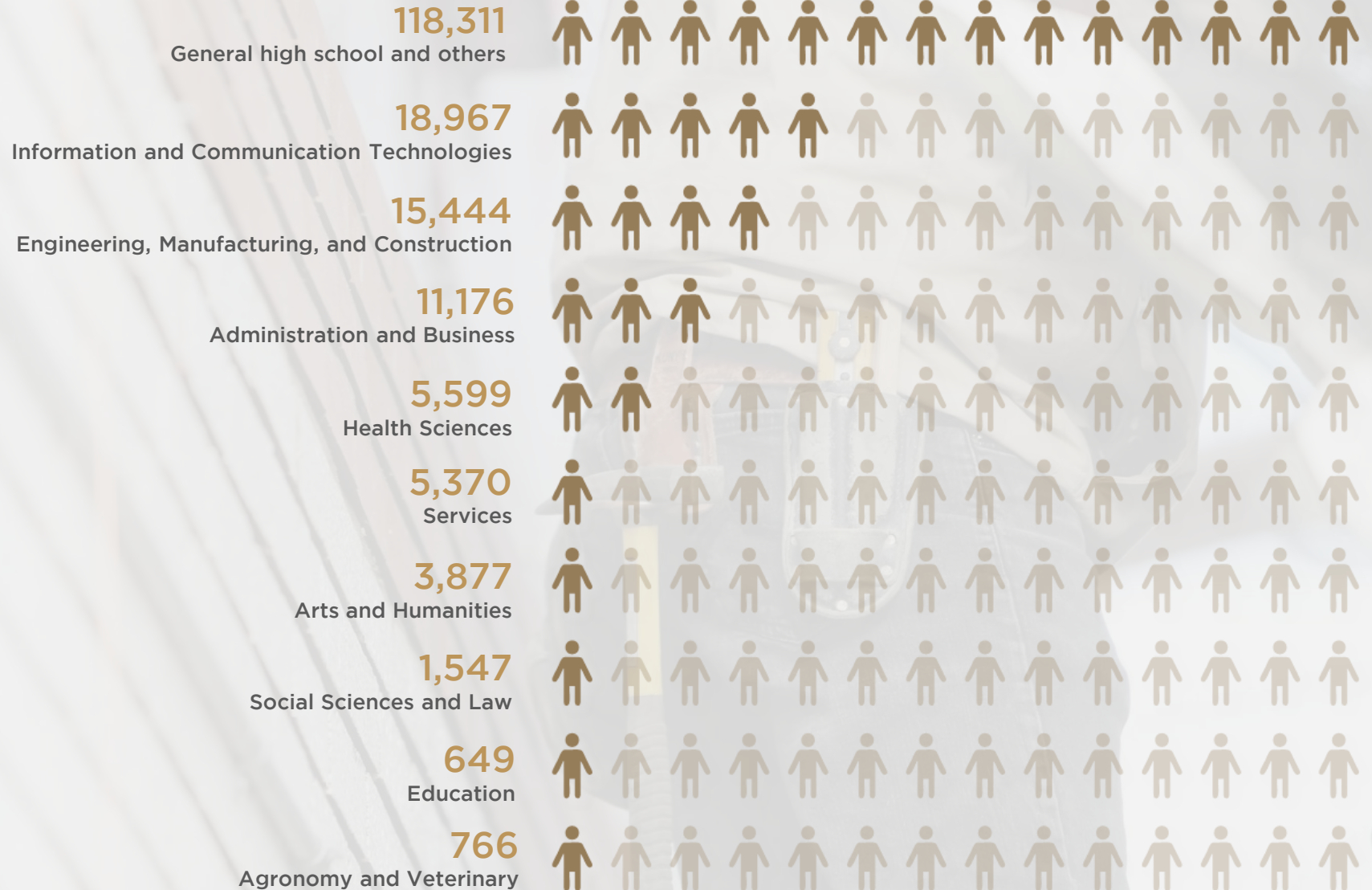
students enrolled in higher and secondary education

Sources:

-ENOE-INEGI, IV trimestre, 2023; Consolidado Estadístico , GEM. 2023-2024.
-CONAHCYT, 2024; Secretaría de Educación, Ciencia, Tecnología e Innovación del GEM, 2023-2024.

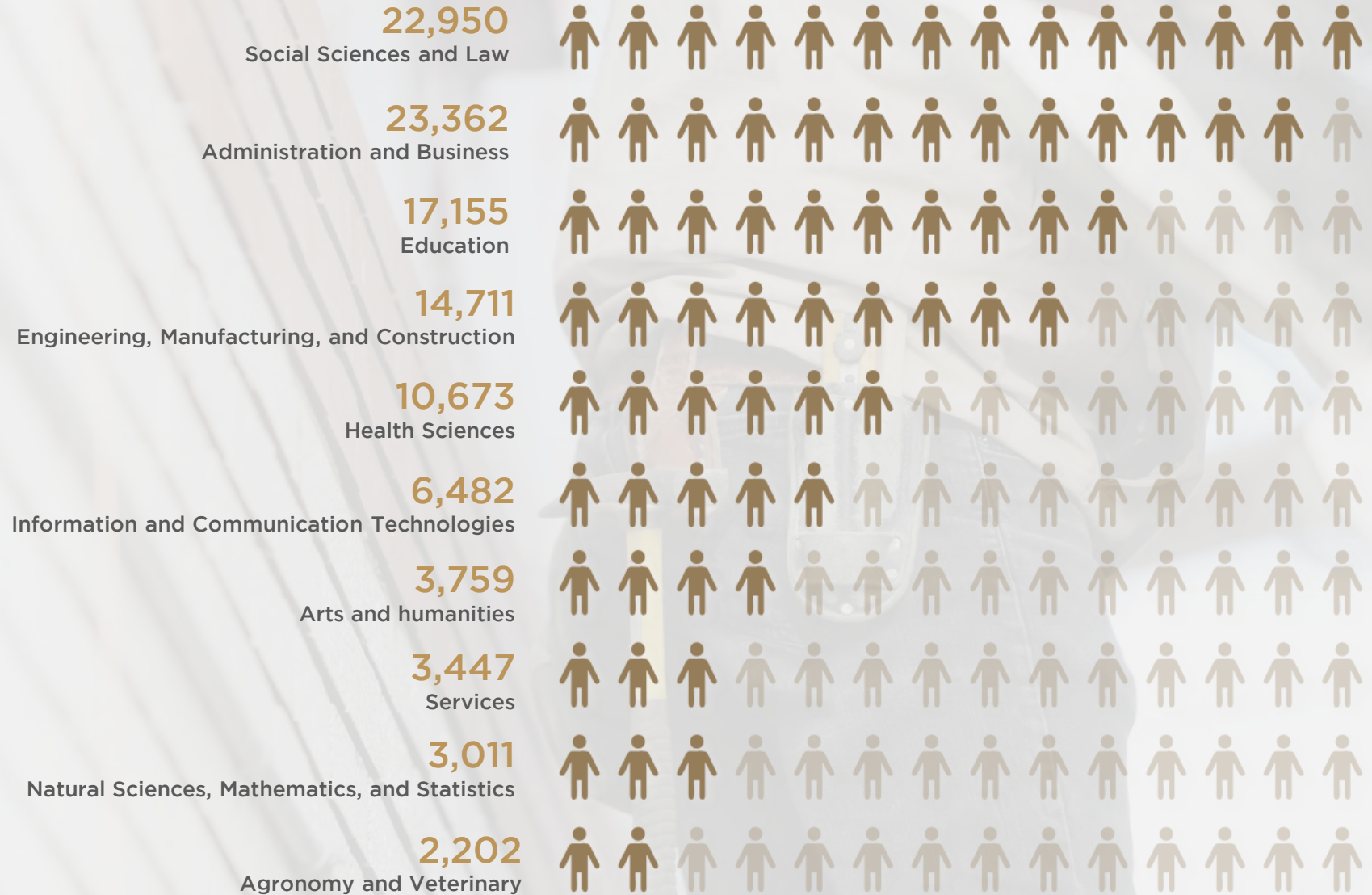
Graduates by field of study

181 thousand 946
students graduated from
upper secondary education
in the 2023-2024 school year



Graduates by field of study

107 thousand 752
students graduated from
higher education in the
2023-2024 academic year



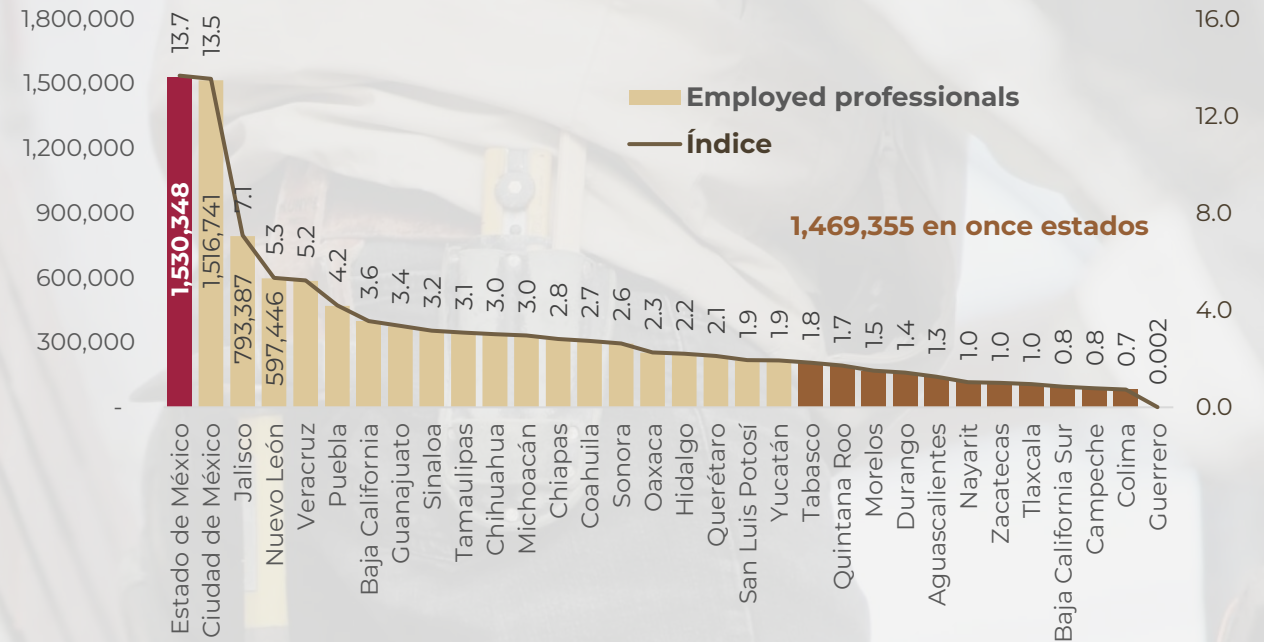
Employed Professionals

One million 530 thousand
professionals are employed

10%
more employed professionals than those registered
jointly in Jalisco and Nuevo Leon

**We employ more
professionals**
than eleven federal entities combined

Employed professionals, December 2023
National total: 11,197,417



Salaries paid to professionals

The incomes of professionals from the State of Mexico are lower:

11.3%
compared to those
paid nationally

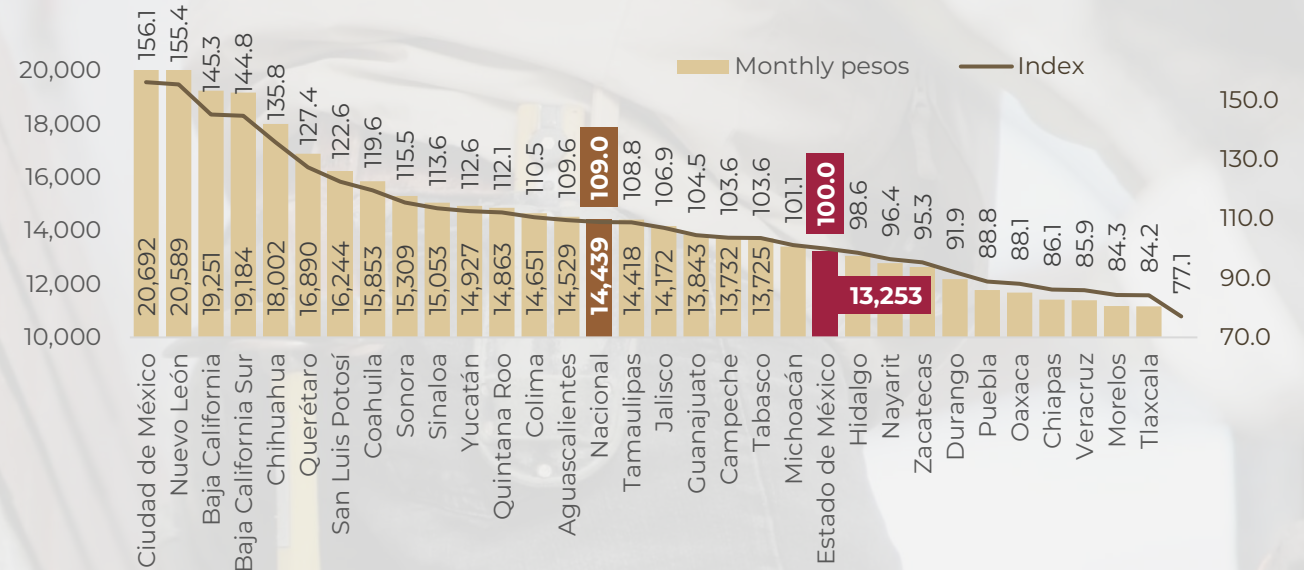
56.4%
compared to those of
Mexico City

52.4%
compared to those of
Nuevo Leon

49.6%
compared to those of
Baja California

9°
entity where the lowest salaries are paid

Average monthly income paid to professionals
December 2023



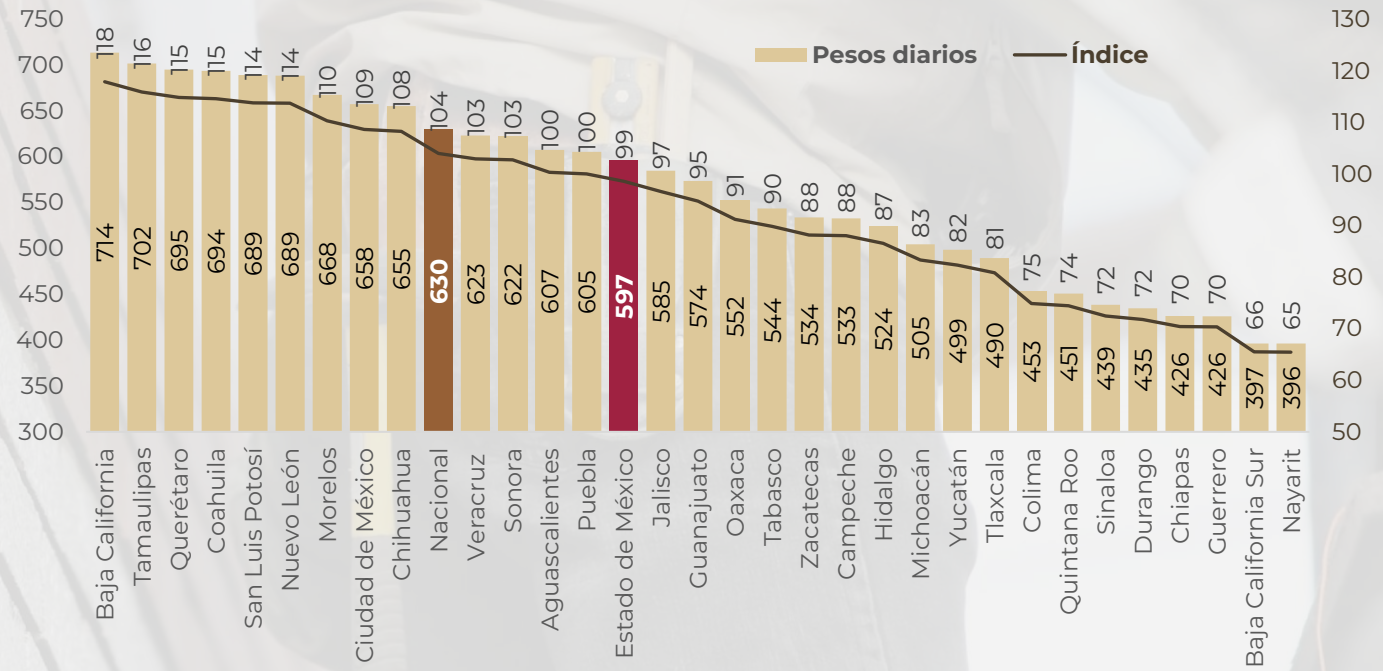
Salaries Paid in the Manufacturing Industry

The salaries paid to workers in the State of Mexico in the manufacturing industry are:

5% lower than those paid nationally

They are inferior to those paid in the leading states generating value in the national manufacturing industry

Average wages paid to IMSS-registered workers in the transformation industry, august 2024



219 industrial
developments

More than 3
thousand 800
companies

More than 233
thousand
jobs

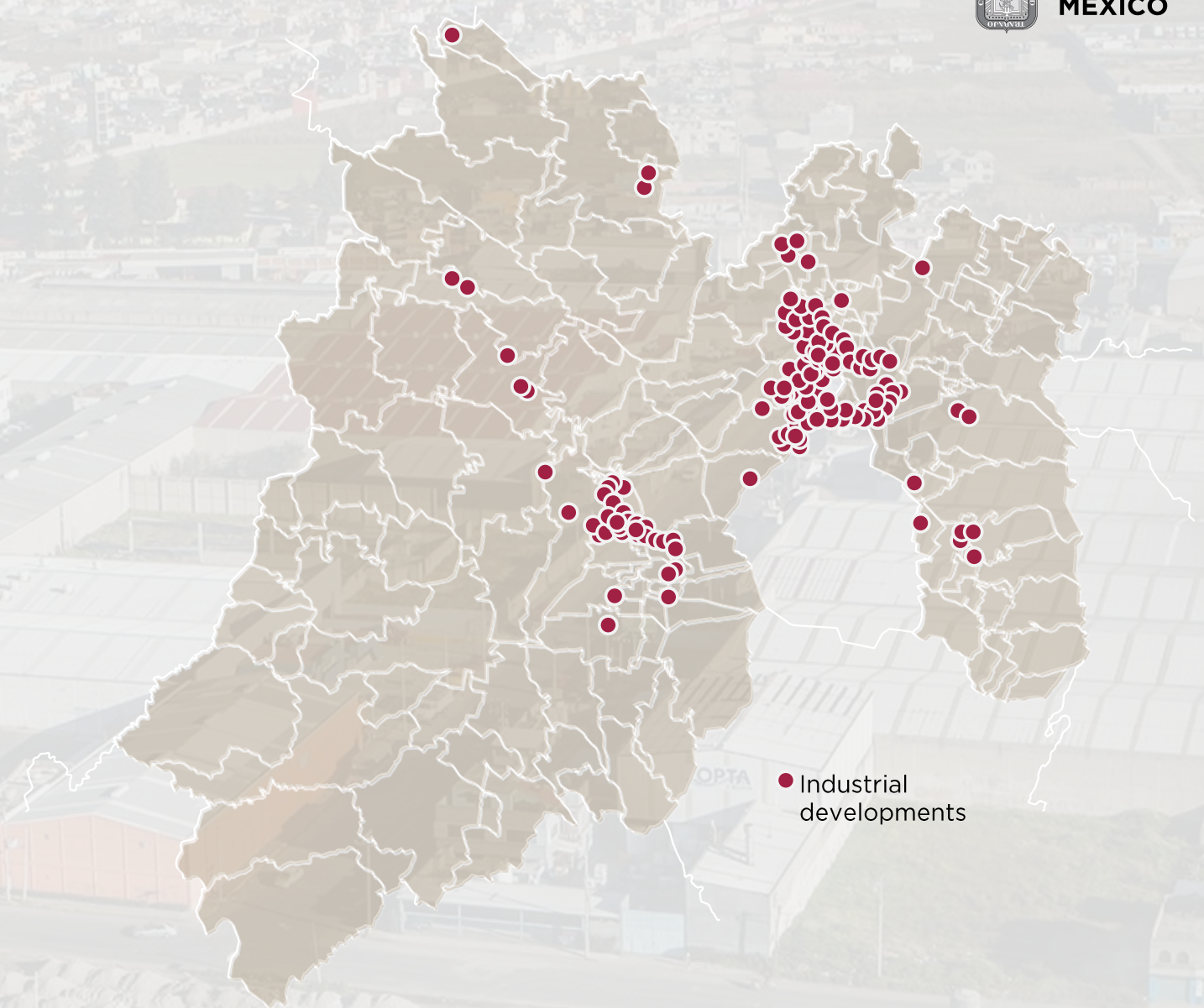
Property regime:

75
municipalized

142
private

2
state-owned

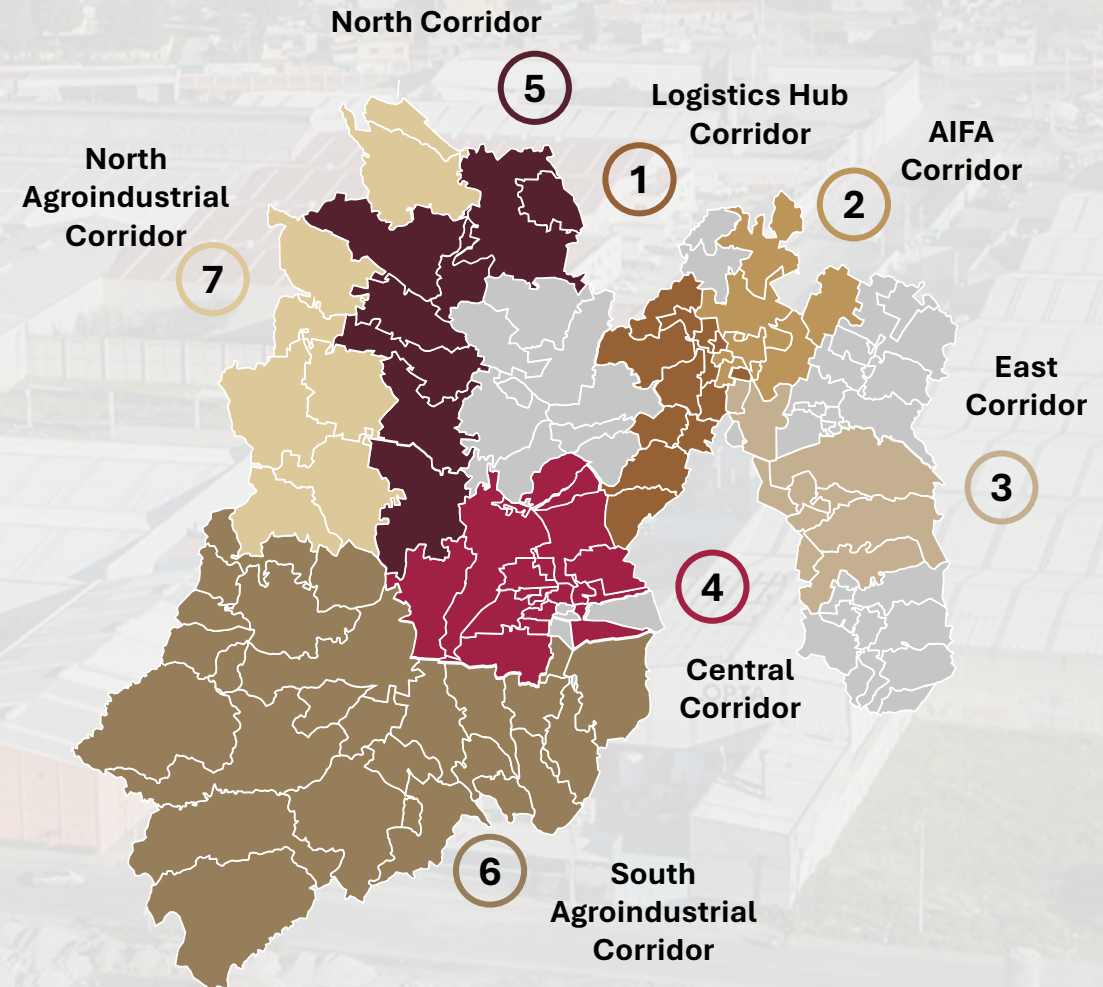
Main activity	Developments	Percentages
Industrial	63	29%
Logistics	104	48%
Mixed	52	23%
Total	219	



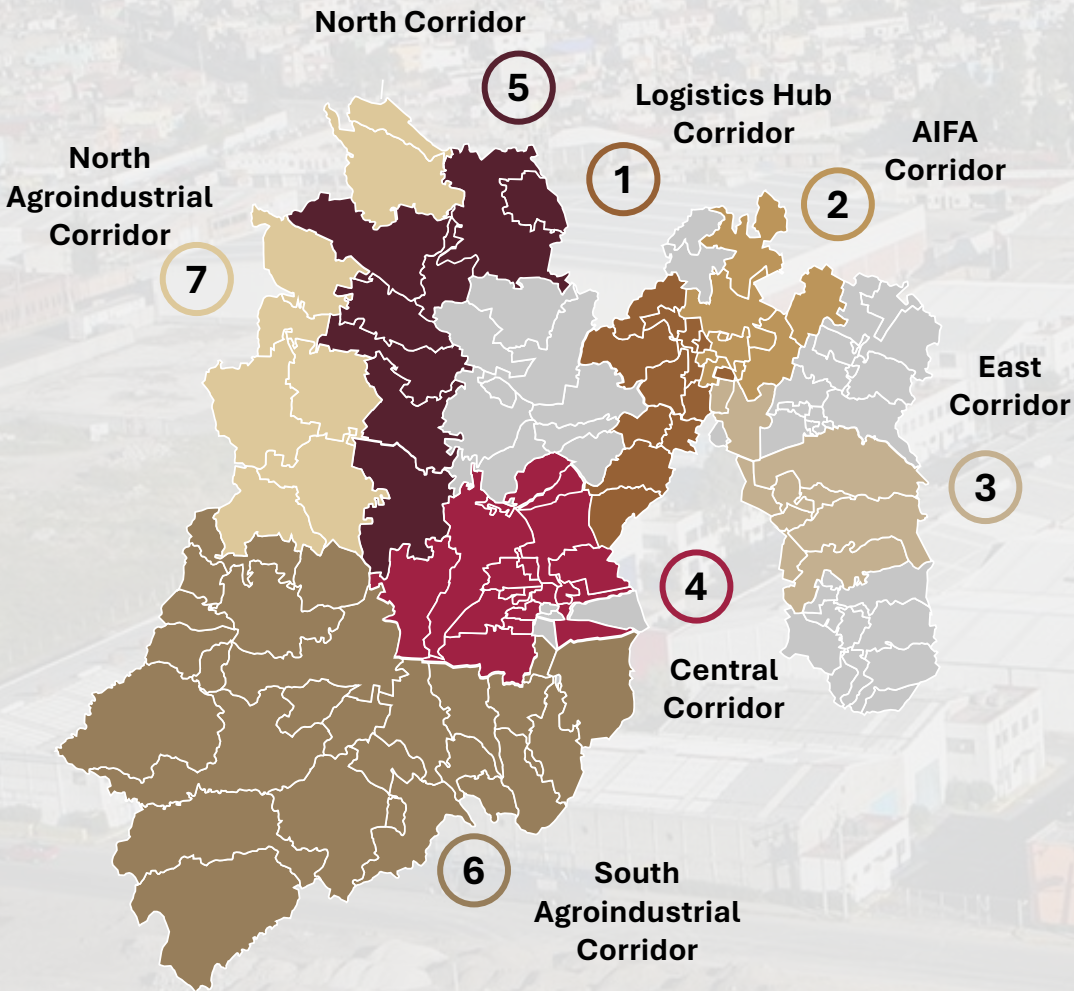
State of Mexico we have **7 Strategic Productive Corridors (SPC)**

➤ They stand out for their location,
economic vocation and connectivity

1. Logistics Hub Corridor
2. AIFA Corridor
3. East Corridor
4. Central Corridor
5. North Corridor
6. South Agroindustrial Corridor
7. North Agroindustrial Corridor



Strategic Productive Corridors (SPC)



1. Logistics Hub Corridor

1. Cuautitlán
2. Tultitlán
3. Naucalpan de Juárez
4. Huixquilucan
5. Cuautitlán Izcalli
6. Atizapán de Zaragoza
7. Tlalnepantla de Baz
8. Coyotepec
9. Huehuetoca
10. Teoloyucan
11. Tenetepetitlán

4. Central Corridor

1. Capulhuac
2. Ocoyoacac
3. San Antonio la Isla
4. Zinacantepec
5. Rayón
6. Tianguistenco
7. Toluca
8. Xonacatlán
9. Chapultepec
10. Mexicaltzingo
11. Calimaya
12. Lerma
13. Metepec
14. Otzolotepec
15. San Mateo Atenco
16. Tenango del Valle

Municipalities covered

- Economic: 54
- Agro-industrial: 34
- Total: 88

2. AIFA Corridor

1. Jaltenco
2. Tecámac
3. Zumpango
4. Tonanitla
5. Tultepec
6. Nextlalpan
7. Melchor Ocampo
8. Hueypoxtila
9. Temascalapa

5. North Corridor

1. Almoloya de Juárez
2. Acambay de Ruíz Castañeda
3. Atlacomulco
4. Soyaniquilpan de Juárez
5. Jilotepec
6. Timilpan
7. Ixtlahuaca
8. Jocotitlán

7. North Agroindustrial Corridor

1. Aculco
2. El Oro
3. Polotitlán
4. San Felipe del Progreso
5. San José del Rincón
6. Temascalcingo
7. Villa de Allende
8. Villa Victoria

3. East Corridor

1. La Paz
2. Texcoco
3. Coacalco de Berriozábal
4. Chalco
5. Chicoloapan
6. Chimalhuacán
7. Ecatepec de Morelos
8. Ixtapaluca
9. Nezahualcóyotl
10. Valle de Chalco Solidaridad

6. South Agroindustrial Corridor

1. Almoloya de Alquisiras
2. Ixtapan del Oro
3. Joquicingo
4. Malinalco
5. Ocuilan
6. San Simón de Guerrero
7. Zumpahuacán
8. Santo Tomás
9. Sultepec
10. Tenancingo
11. Luvianos
12. Tonicato
13. Amatepec
14. Valle de Bravo
15. Villa Guerrero
16. Zacazonapan
17. Zacualpan
18. Amanalco
19. Coatepec Harinas
20. Tlatlaya
21. Donato Guerra
22. Ixtapan de la Sal
23. Oztolopan
24. Tejupilco
25. Temascaltepec
26. Texcaltitlán

Note: preliminary version

Strategic sectors

Secondary sectors

- Energy
- Construction
- Manufacturing Industries
 - Automotive
 - Chemical
 - Food
 - Textile
 - Plastics
 - Beverages and Tobacco
 - Paper and Printing
 - Metal Products
 - Pharmaceutical
 - Furniture Manufacturing

Sector terciario

- Commerce
- Logistics
- Financial and Insurance Services
- Real Estate Services
- Waste Management
- Professional, Scientific, and Technical Services

Secondary sector

► National data

1° place

with one thousand
439 economic
units

1° place

with 7.4% of this sector's
GDP at the national level

► Statal data

1.1%

contribution to the
state economy

14 mil 945

employed
individuals

1.4%

of the state's foreign
direct investment

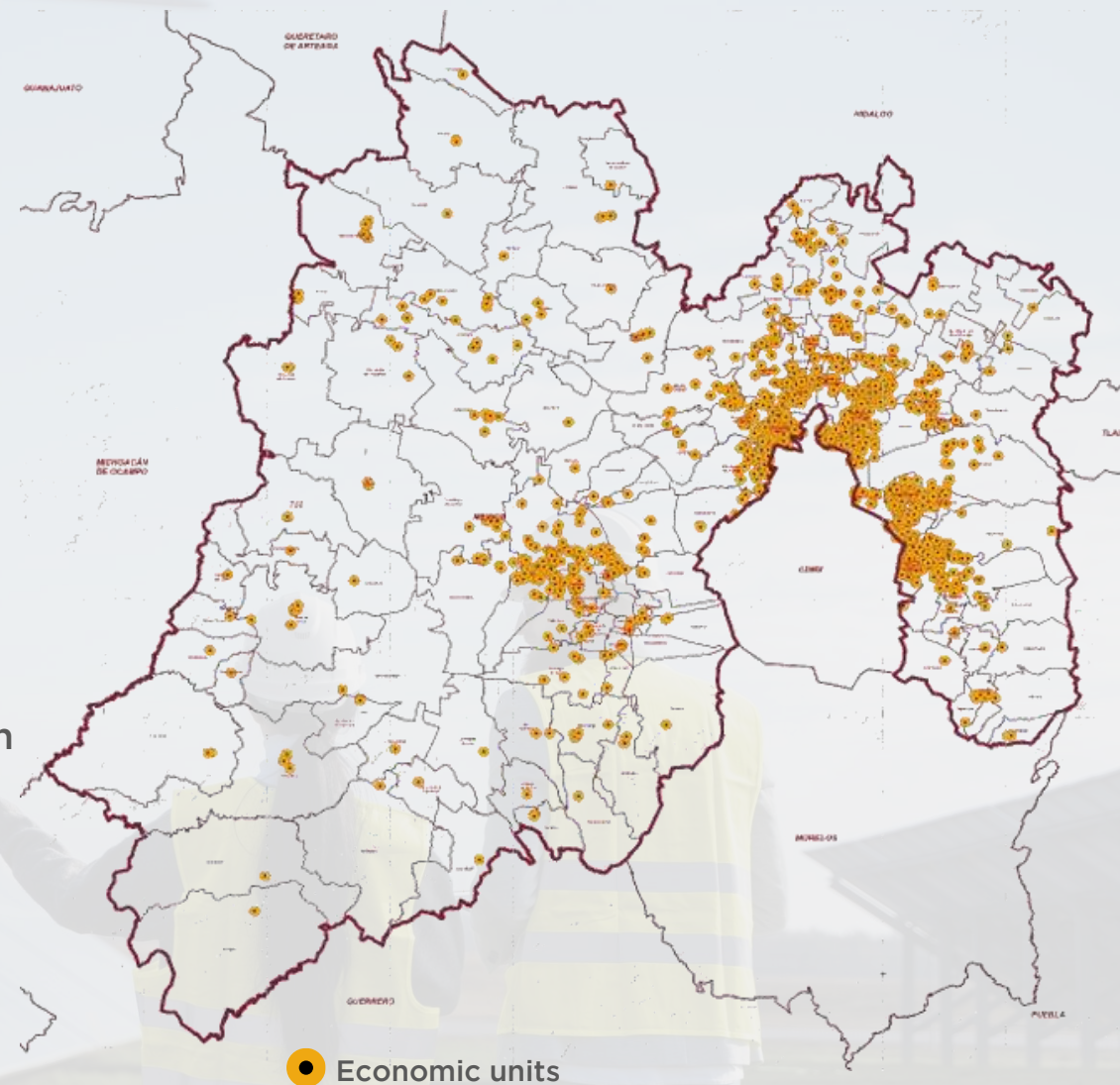
Sources:

DENUE-INEGI, May 2024.

GDP-INEGI, 2022.

ENOE - INEGI, 2nd quarter of 2024.

Ministry of Economy, 2006 - 2nd quarter of 2024.



Construction

➤ National data

6.7%
of the national
construction sector

One thousand 508
economic units

➤ Statal data

4.0%
of the state
economy

**666 thousand
423**
employed individuals

12.9%
of the state's foreign
direct investment

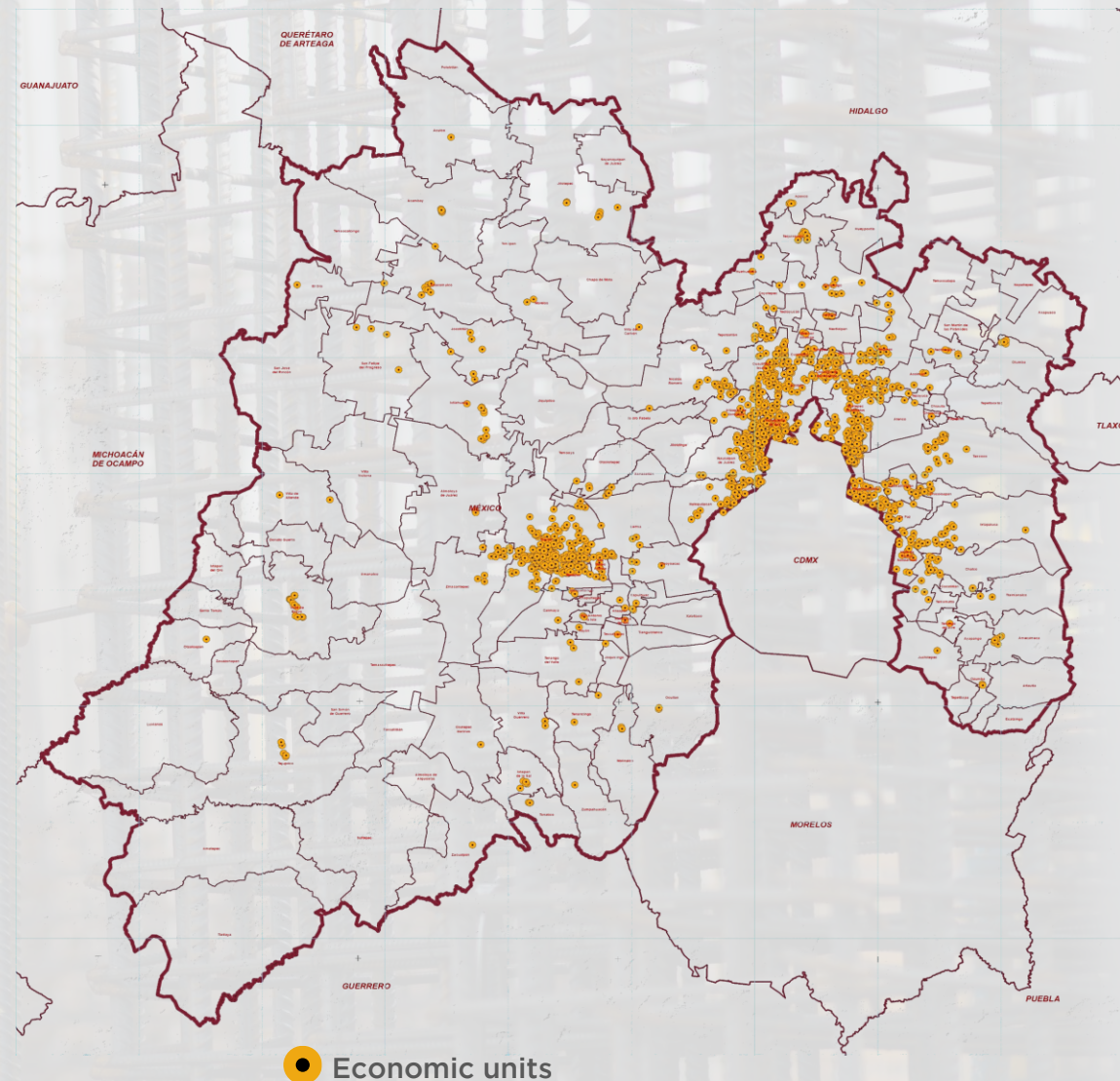
Sources:

DENUE-INEGI, May 2024.

GDP-INEGI, 2022.

ENOE - INEGI, 2nd quarter of 2024.

Ministry of Economy, 2006 - 2nd quarter of 2024.



Manufacturing industries

► National data

1° place

with 65 thousand 364
economic units

9.6%

of the national
manufacturing production

► State data

21.9%

of the state
economy

99.2%

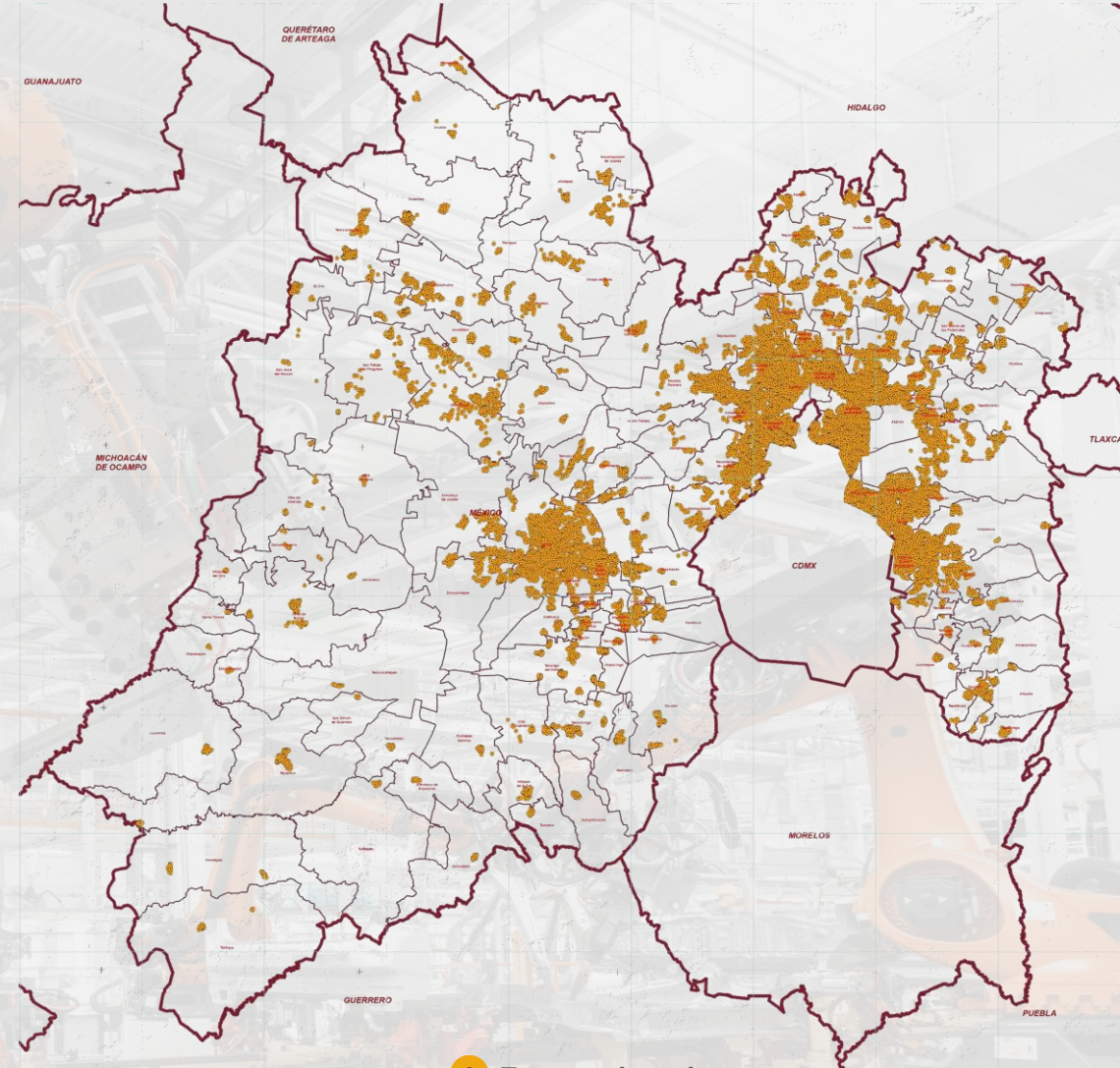
of total

Over 1.2 million

employed individuals

58.4%

of the state's foreign
direct investment



● Economic units

Sources:

DENUE-INEGI, May 2024.

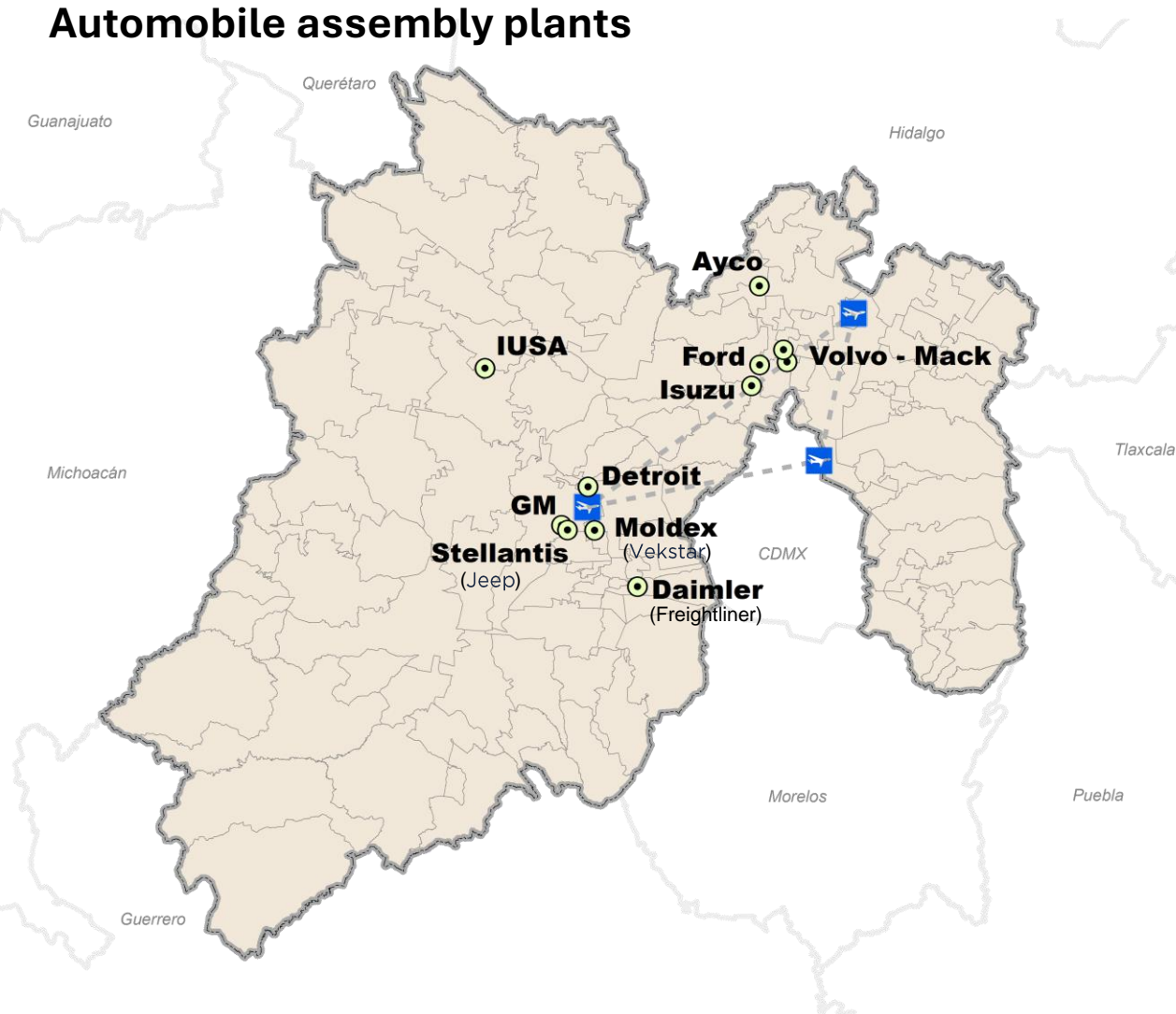
GDP-INEGI, 2022.

ENOE - INEGI, 2nd quarter of 2024.

Ministry of Economy, 2006 - 2nd quarter of 2024.

Automotive industry ecosystem

Automobile assembly plants



Key figures

382,251

economic units, belong to the **more than 150 supplier branches** of the automotive industry.

9

assembly plants

12.6%

contribution to state **value added**.

Assembly plants

Automobiles, electric cars and vans.



1. **Ford:** Cuautitlan Izcalli (1964).
2. **Moldex:** Lerma (1986) (Flotilla).
3. **Stellantis:** Toluca (1968).
4. **IUSA:** Jocotitlan (ND).

Engines and transmissions.



1. **General Motors:** Toluca (1965).
2. **Detroit:** Toluca (ND).

Trucks, tractor-trailers and buses.



1. **Daimler (Freightliner):** Tianguistenco (1969).
2. **Ayco:** Huehuetoca (1986).
3. **Volvo:** Tultitlan (2000).
4. **Mack:** Tultitlan (2000).
5. **Isuzu:** Cuautitlan Izcalli (2009).

Ford



STELLANTIS

DAIMLER



ISUZU



Products produced in the State.



BALAAM



OLIN



ATL



Iik

IUSA
Jocotitlan

Toluca

Stellantis
(Jeep)



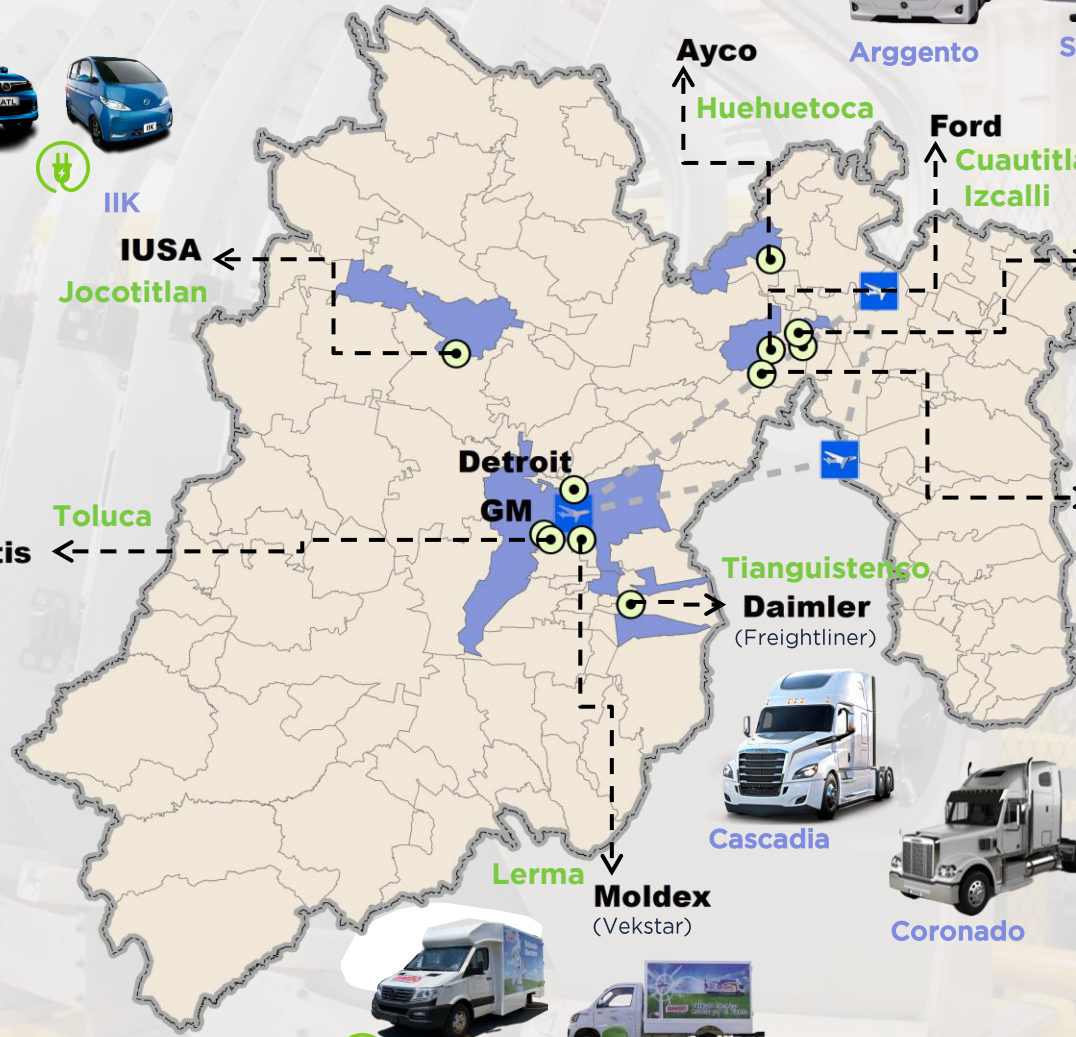
Jeep Wagoneer



Compass



Electric
model



Ayco

Huehuetoca

Argento

Sigma

Zafiro

Orion

Ford

Cuautitlan
Izcalli



Mustang Mach-E

Volvo - Mack

Tultitlan



9800



7300
(articulado)



Luminus

Isuzu

Cuautitlan
Izcalli



Series: ELF y Forward

Tlanguistenco

Daimler
(Freightliner)



Cascadia



Coronado



M2

Lerma

Moldex
(Vekstar)



Stellar



VK3

Chemical Industry

➤ National data

1° place
with 975 economic
units

1° place
with 27.1% of national
production

2° place
with 22.0% of foreign
direct investment

➤ Statal data

8.8%
of the state's
value added

49 mil 866
employed
individuals

8.0%
of the state's
exports

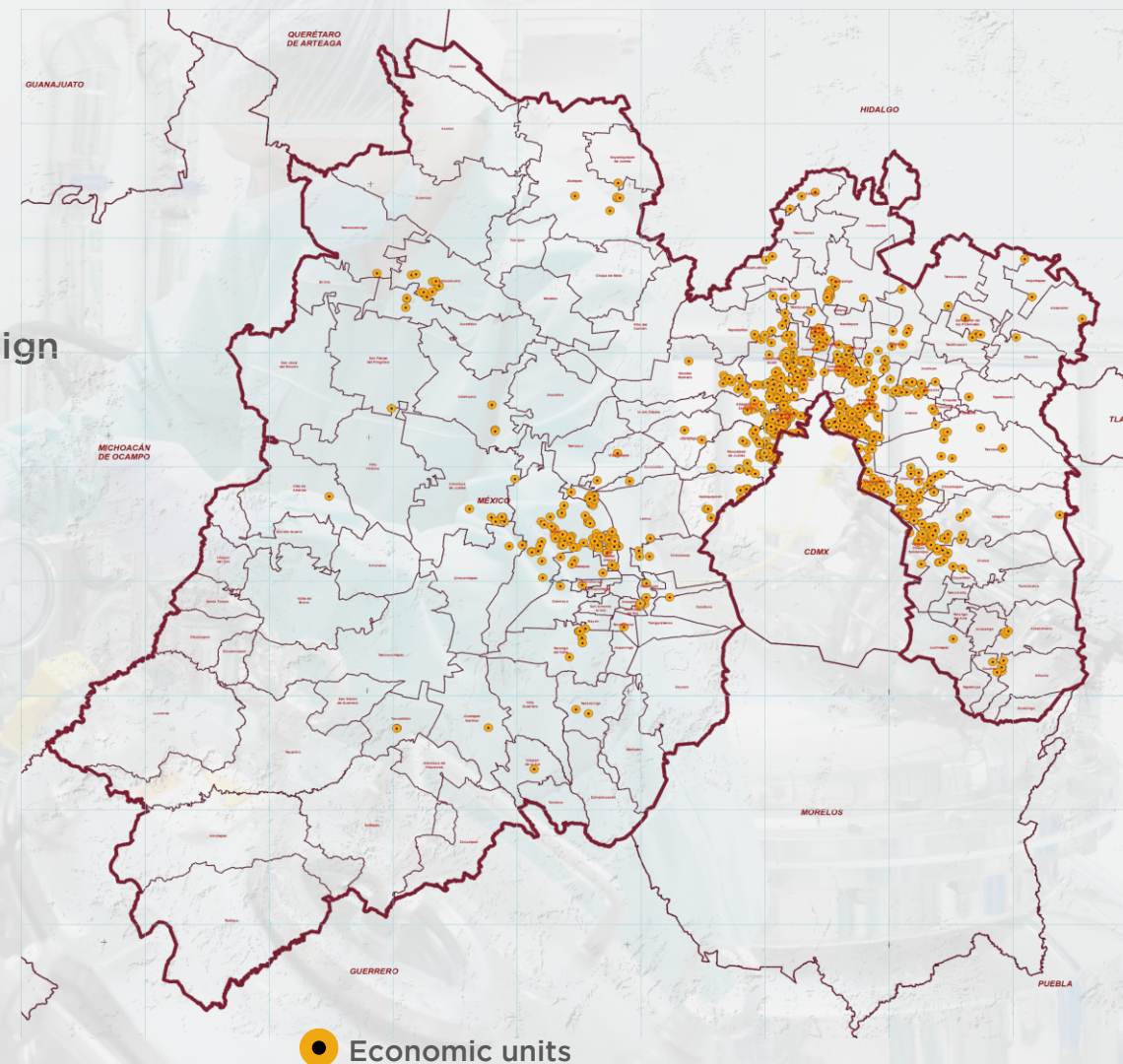
Sources:

DENUE-INEGI, May 2024.

GDP-INEGI, 2022.

Economic Censuses 2019.

Ministry of Economy, 2006 - 2nd quarter of 2024.



Food Industry

► National data

1° place
with 28 thousand
745 economic
units

1° place
With 13.2% of
national production

3° place
with 8.8% of exports.

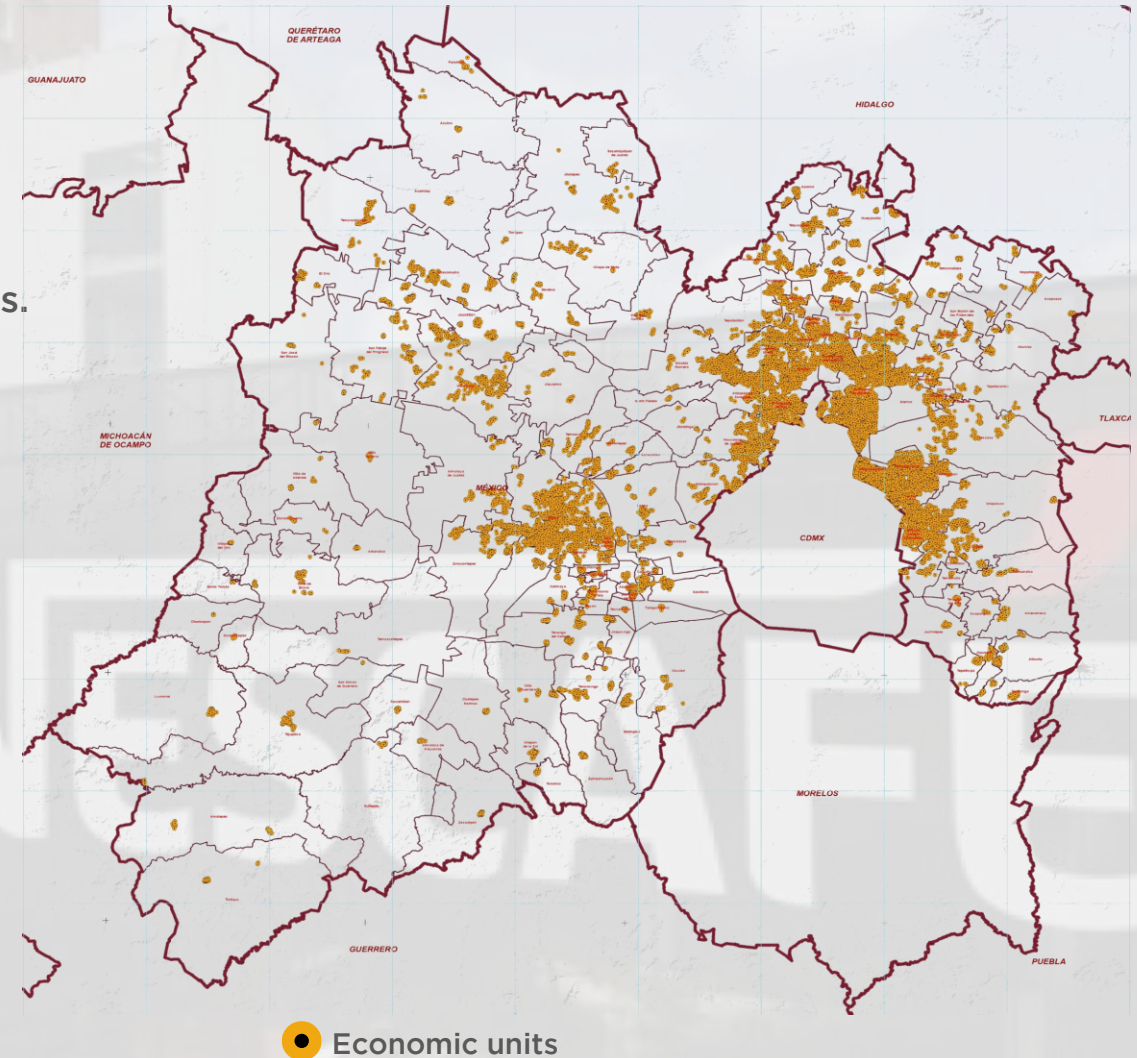
► Statal data

5.9%
of the state
economy

131 thousand 865
employed individuals

3.7%
of the state's
foreign direct
investment

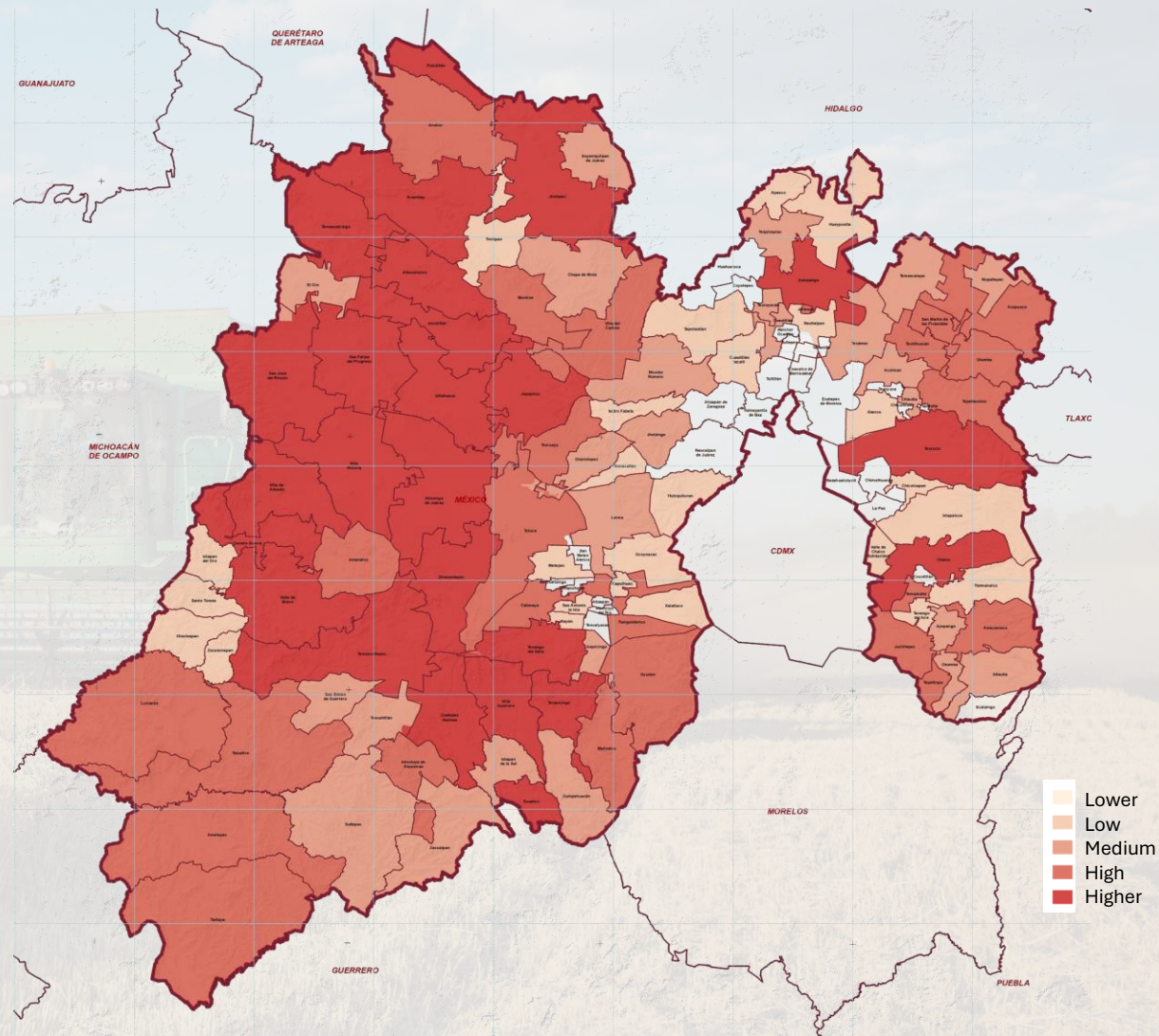
Sources:
DENUE-INEGI, May 2024.
GDP-INEGI, 2022.
Economic Censuses 2019.
Ministry of Economy, 2006 – 2nd quarter of 2024



Municipalities by agricultural vocation

➤ Main agricultural municipalities

- Villa Guerrero
- Coatepec Harinas
- Tenancingo
- Almoloya de Juárez
- Jocotitlán
- Ixtlahuaca
- Villa Victoria
- Temascaltepec
- Jilotepec
- San José del Rincón
- Texcoco
- Chalco



1° place

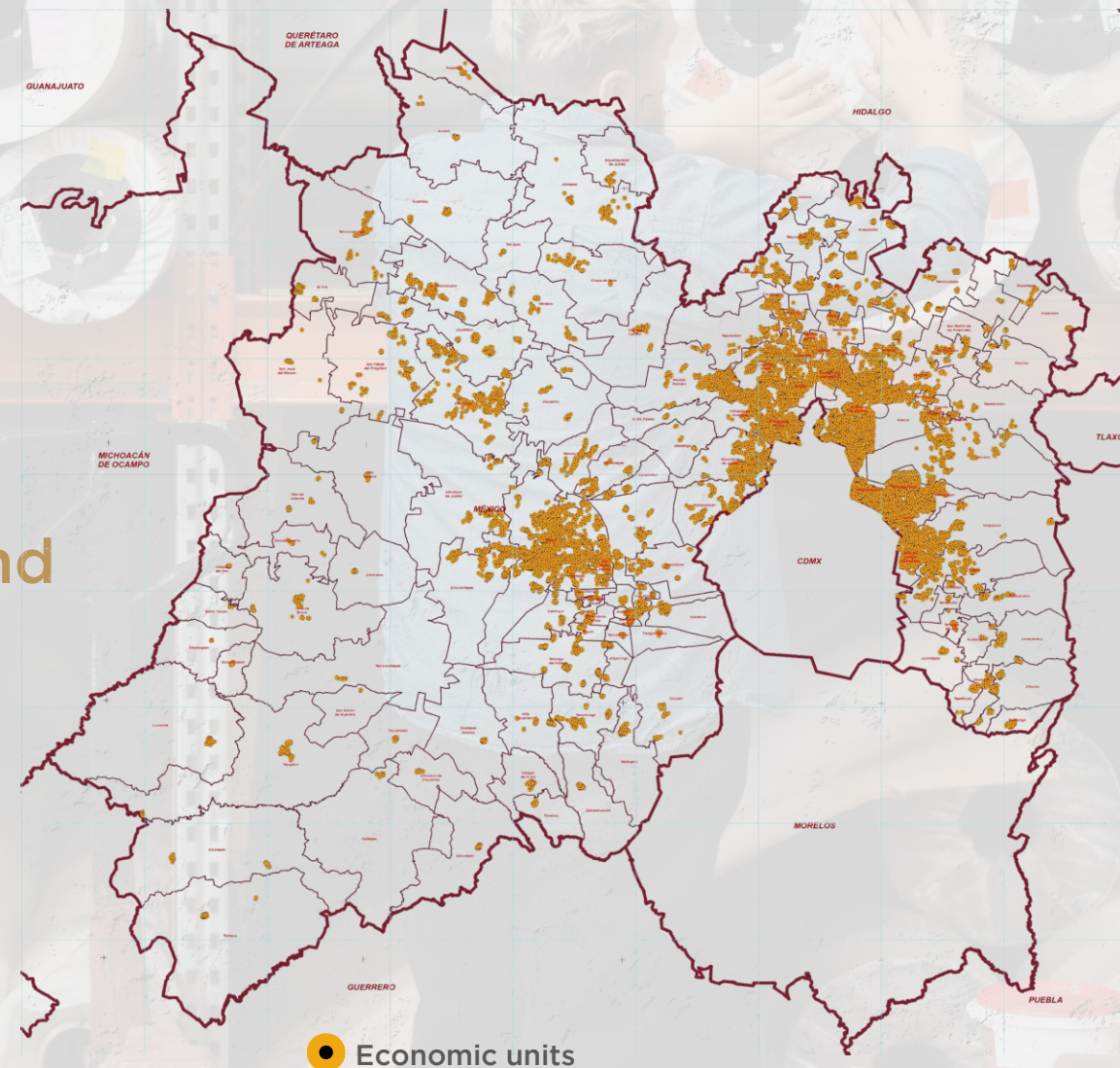
Statal data

102 thousand
455
employed individuals

2.2%
of the state's
exports

0.3%
of the state's
foreign direct
investment

-DENUE-INEGI, May 2024; Economic Censuses-INEGI, 2019.
Exports by Federal Entity-INEGI, 2023, Ministry of Economy, 2006 – 2nd quarter of 2024



Plastics

➤ National data

2° place
with thousand 119
economic units

2° place
with 17.5% of
national production

➤ Statal data

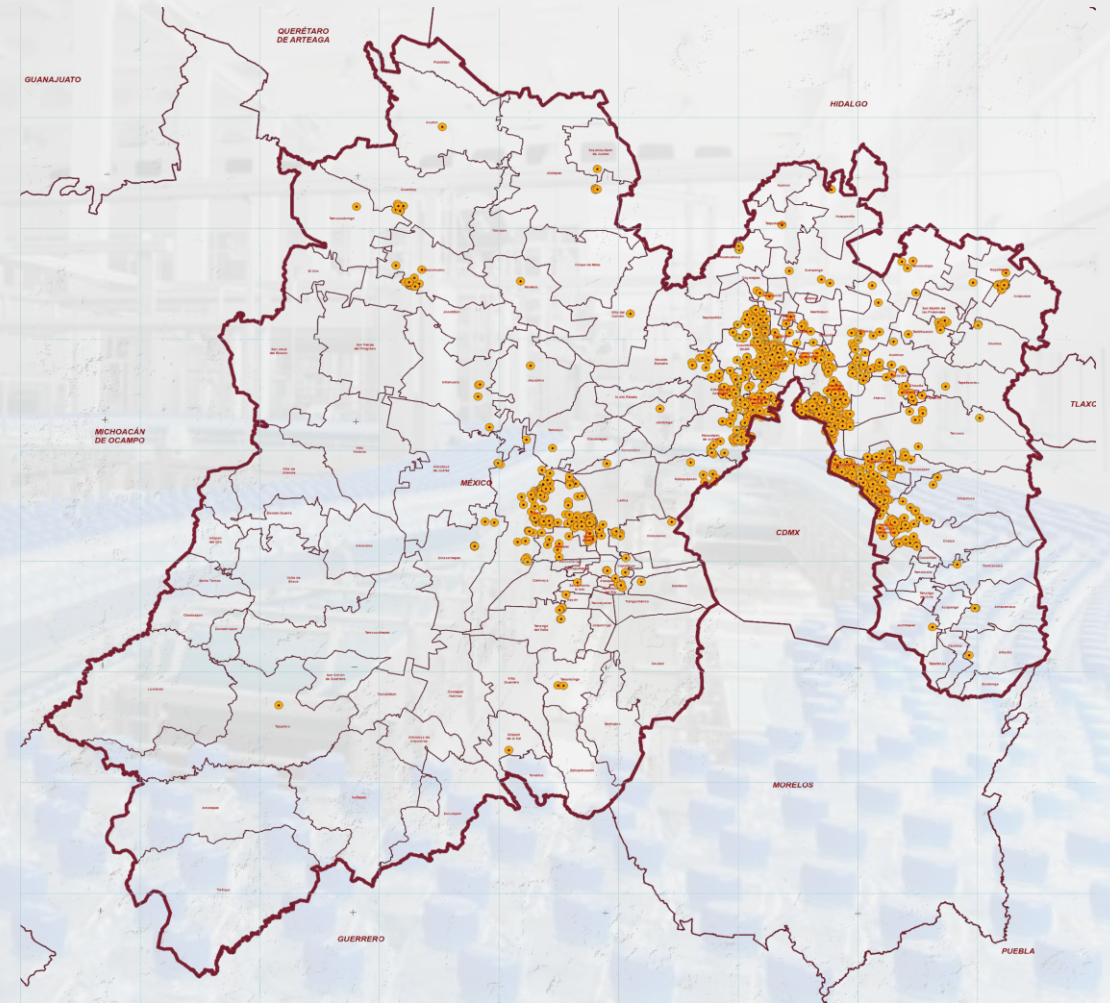
3.0%
of the
state's value
added

55 thousand 483
employed individuals

0.5%
of the state's
foreign direct
investment

Sources:

DENUE-INEGI, May 2024.
Economic Censuses-INEGI, 2019.
Exports by Federal Entity-INEGI, 2023.
Ministry of Economy, 2006 - 2nd quarter of 2024..



● Economic units

Beverages and Tobacco

» National data

1° place

with 4 thousand
775 economic units

2° place

with 12.4% of national
production

» Statal data

3.0%

of the state's value
added

0.9%

of the state's exports

20,626

employed
individuals

9.2%

of the state's foreign
direct investment

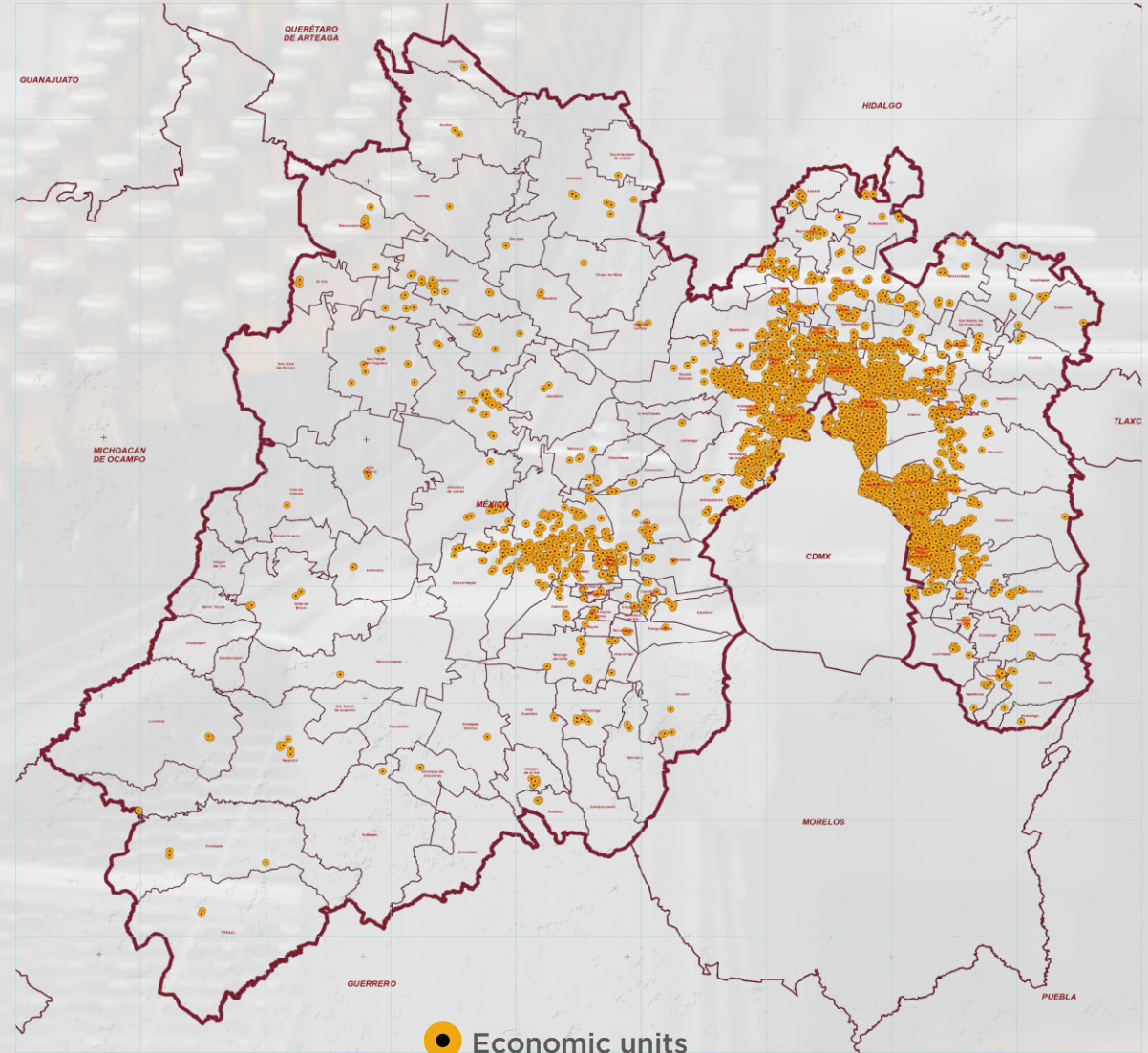
Sources:

DENUE-INEGI, May 2024.

Economic Censuses-INEGI, 2019.

Exports by Federal Entity-INEGI, 2023.

Ministry of Economy, 2006 – 2nd quarter of 2024..



Paper and Printing Industry

➤ National data

1° place
with 17.7% of
national
production

2° place
with 2,783
economic units

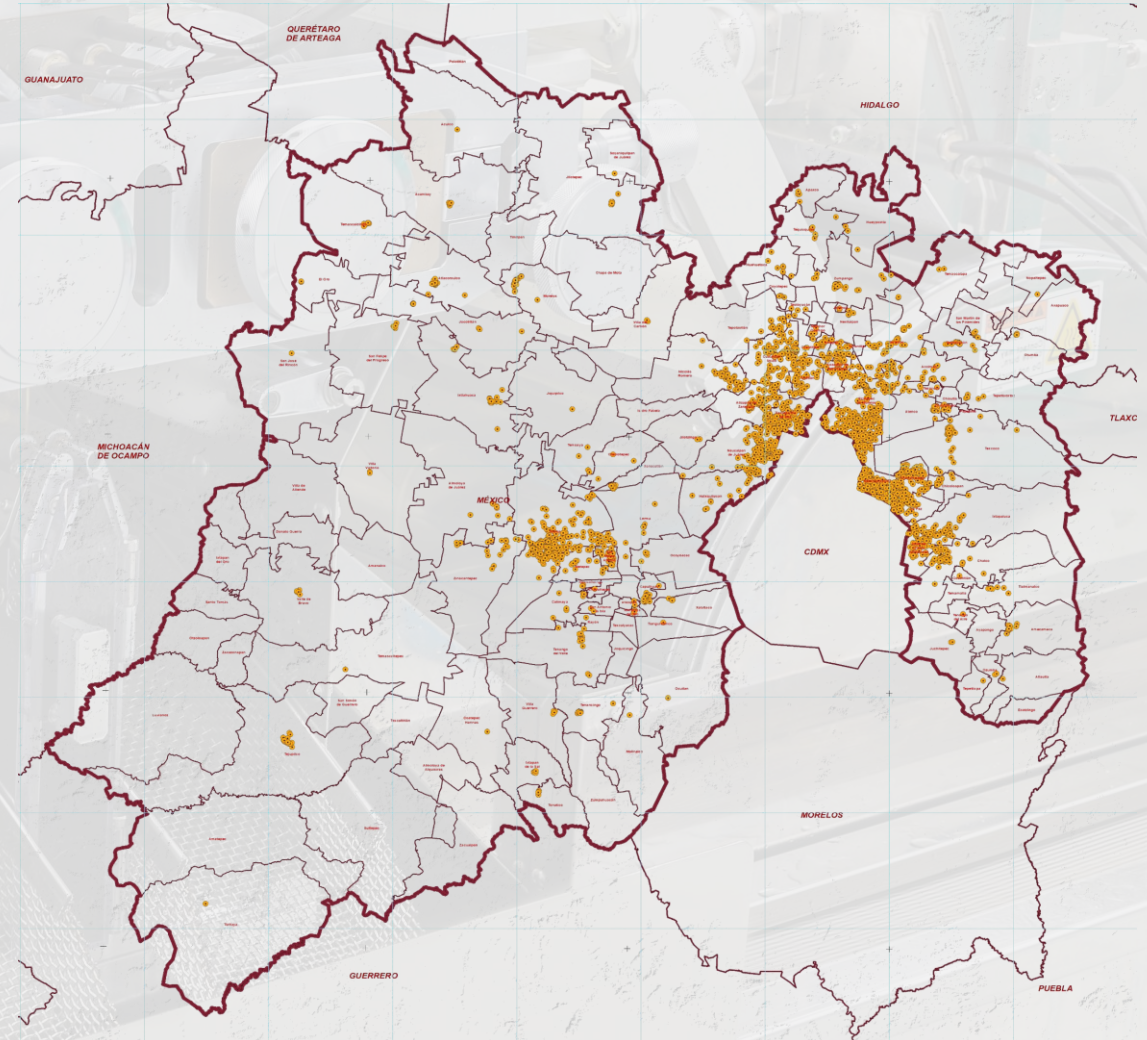
2° place
in attracting foreign
investment with
19.0%

➤ State data

2.4%
of the state's value
added

**42 thousand
565**
employed individuals

1.2%
of the state's
exports



● Economic units

Sources:
DENUE-INEGI, May 2024.
Economic Censuses-INEGI, 2019.
Exports by Federal Entity-INEGI, 2023.
Ministry of Economy, 2006 - 2nd quarter of 2024..

Metal Industries

➤ National data

1° place

with 8 thousand
375 economic
units

2° place

with 11.9% of
national production

5° place

with 7.3% of
exports

➤ Statal data

2.2%

of the state's
value added

54 mil 748

employed
individuals

0.4%

of foreign direct
investment

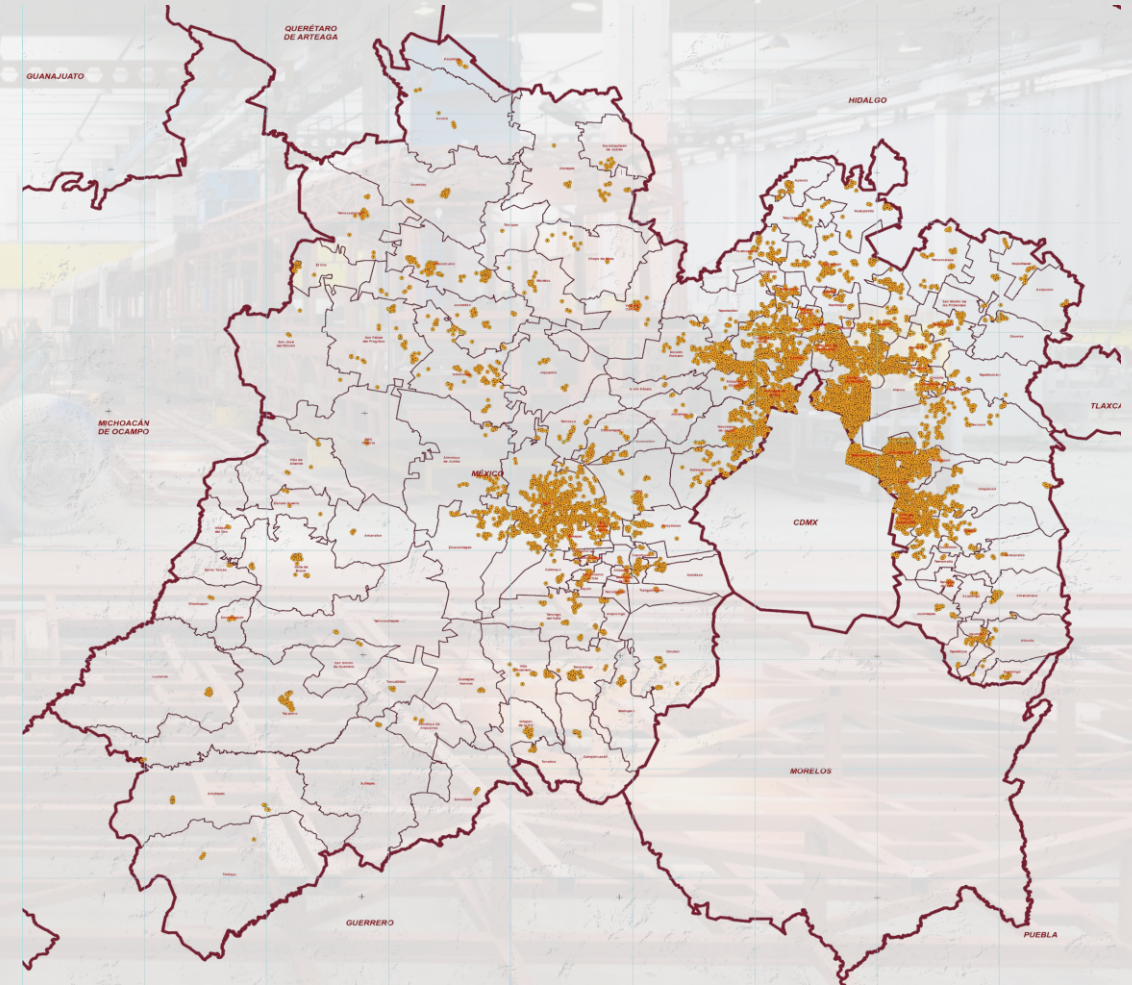
Sources:

DENUE-INEGI, May 2024.

Economic Censuses-INEGI, 2019.

Exports by Federal Entity-INEGI, 2023.

Ministry of Economy, 2006 – 2nd quarter of 2024.



● Economic units

Municipalities with a vocation for metallic mining



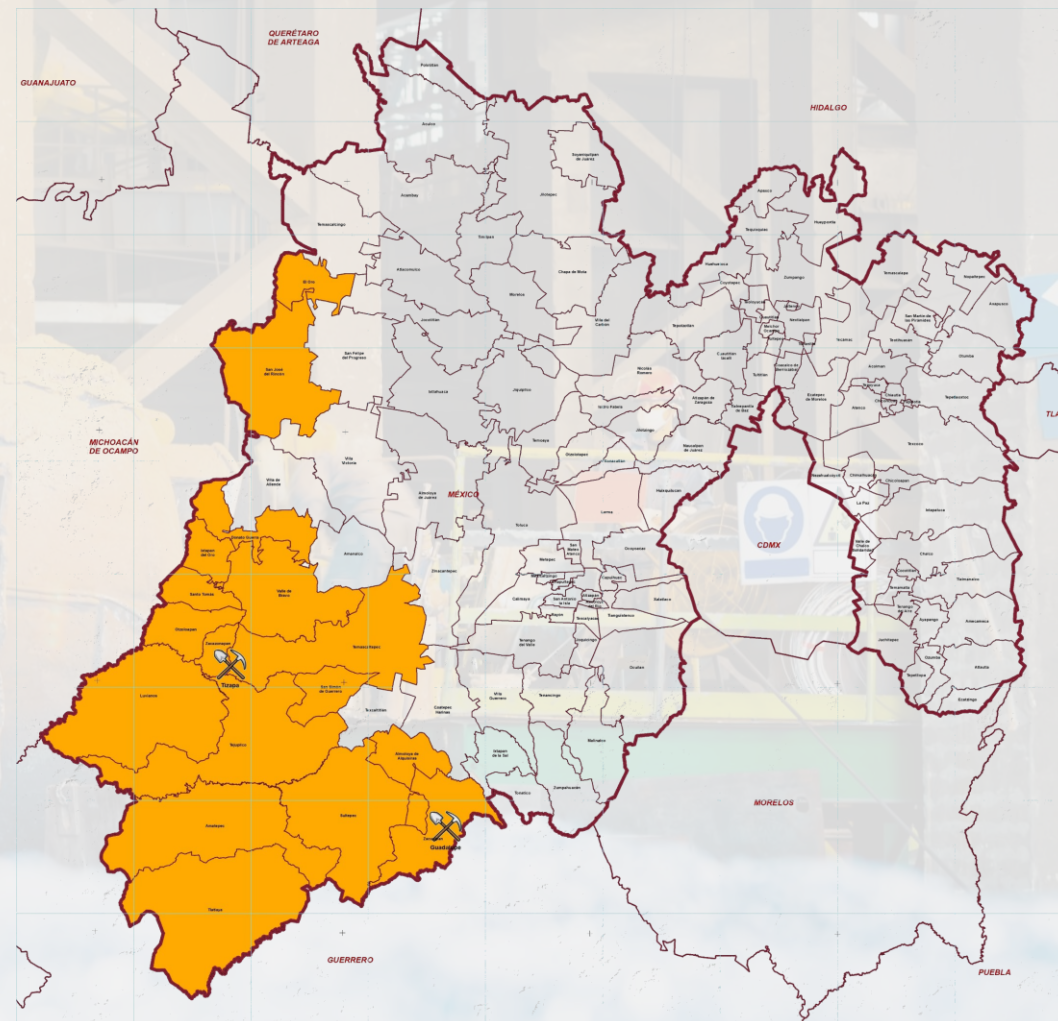
Municipality/Mine	Type og Mineral
Zacazonapan Mine:Tizapa	Silver, lead, zinc, cooper and gold
Zacualpan Mine:Guadalupe	Silver, lead, zinc and gold

Mines in operation

Municipalities with a mining vocation for metallic minerals	
- El Oro.	- San Simón de Guerrero.
- San José del Rincón.	- Tejupilco.
- Donato Guerra.	- Luvianos.
- Ixtapan del Oro.	- Amatepec.
- Temascaltepec.	- Tlatlaya.
- Valle de Bravo.	- Zacualpan.
- Zacazonapan.	- Sultepec.
- Otzoloapan.	- Almoloya de Alquisiras
- Santo Tomás.	

Sources:

- Instituto de Fomento Minero y Estudios Geológicos del Estado de México (IFOMEGEM).
- Secretaría de Economía, 2023



Pharmaceutical Industry

➤ National data

3° place

with 113 economic units

2° place

with 18.9% of national production

2° place

with 19.8% of foreign direct investment

➤ Statal data

1.9%

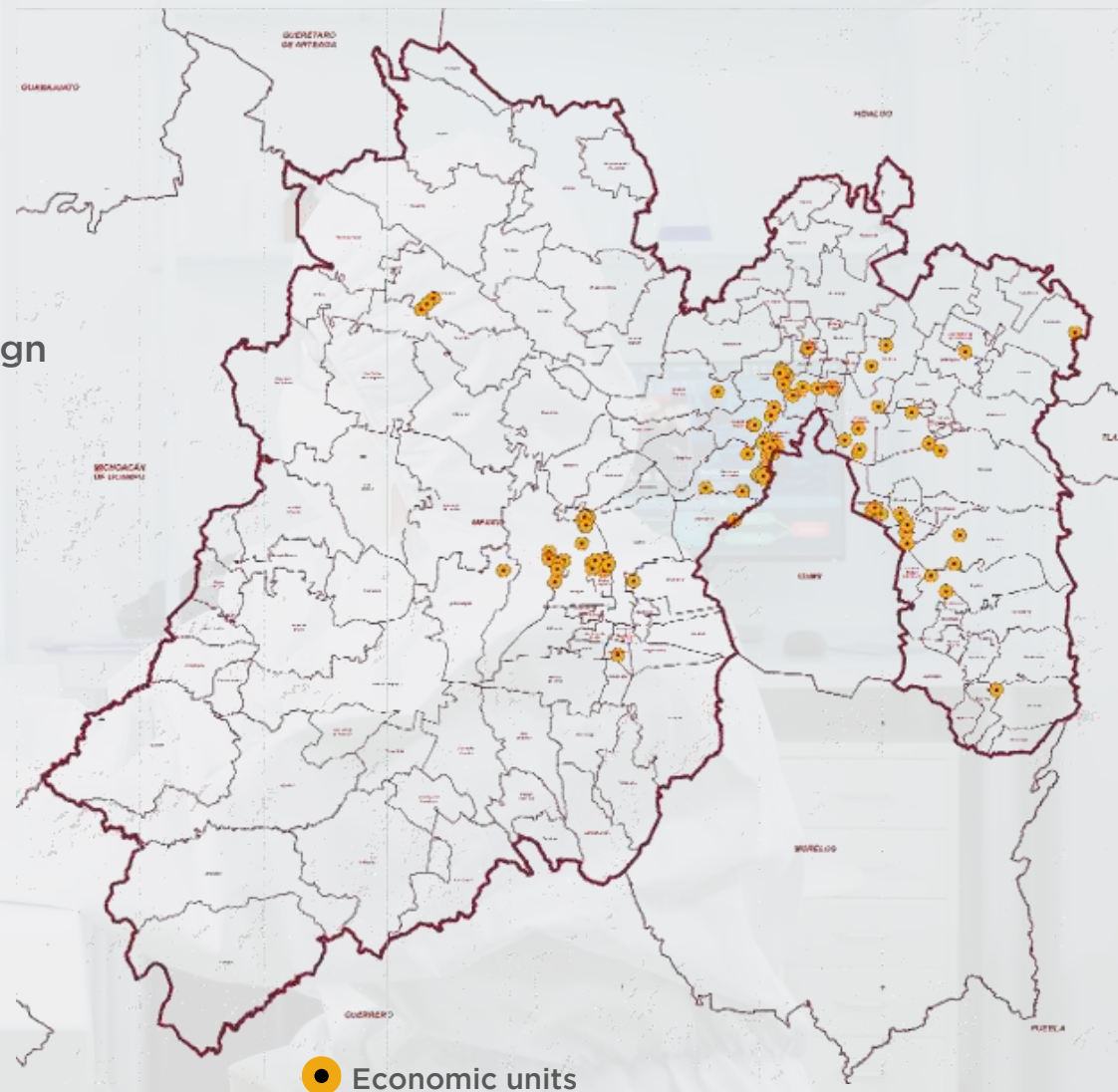
of the state's value added

13 mil 567

employed individuals

Sources:

- DENE-INEGI, May 2024.
- Economic Censuses-INEGI, 2019.
- Ministry of Economy, 2006–2nd quarter of 2024.



Furniture Manufacturing

➤ National data

2° place
with 3 thousand
243 economic
units

1° place
with 16.0% of national
production

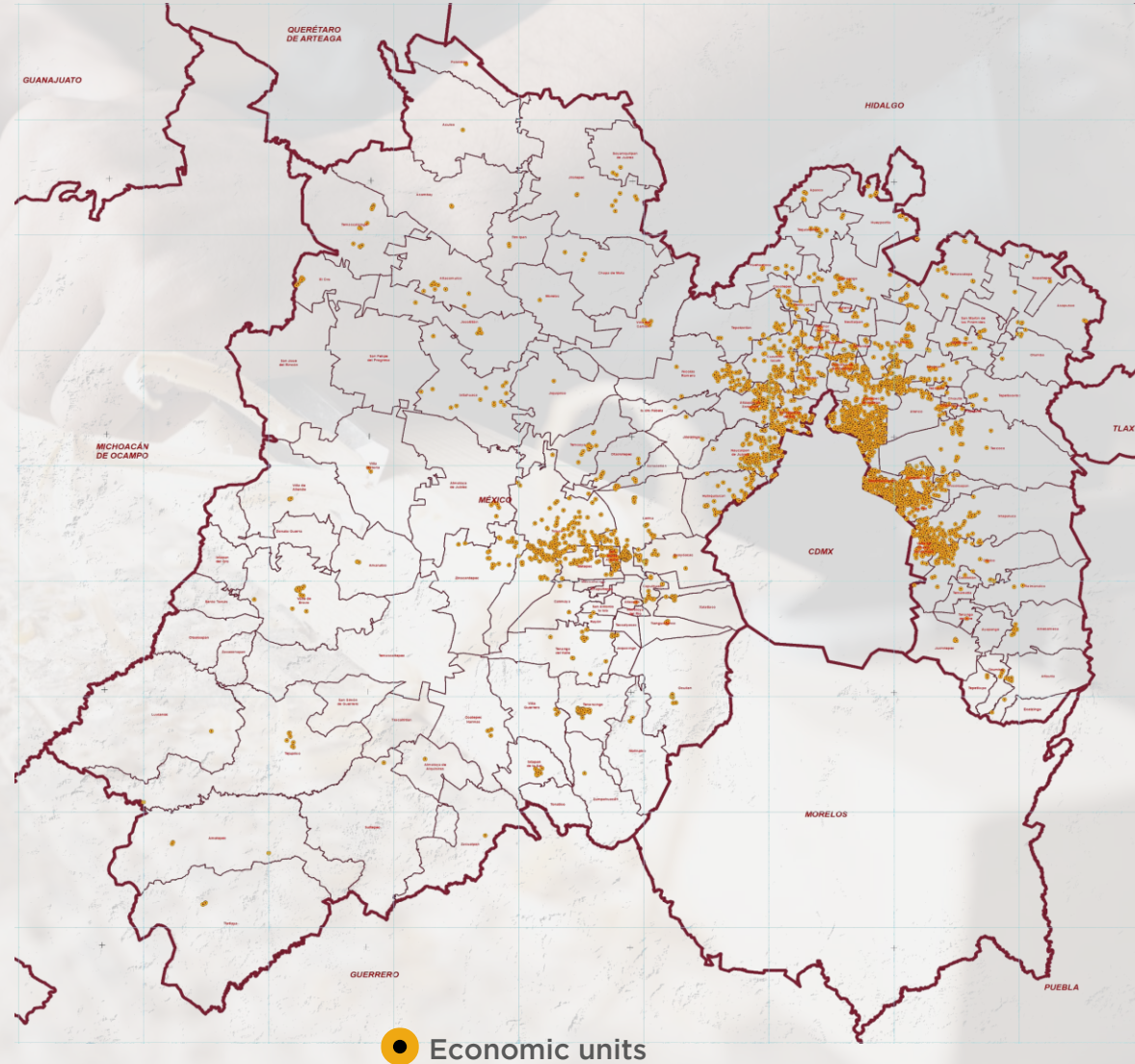
➤ Statal data

0.7%
of the state's value
added

22 mil 336
employed
individuals

0.2%
of the state's
exports

0.03%
of the state's
foreign direct
investment





Tertiary sector

➤ National data

1° place

with 354 thousand
823 economic
units

2° place

with 11.3% of national
commerce

➤ Statal data

24.0%

of the state
economy

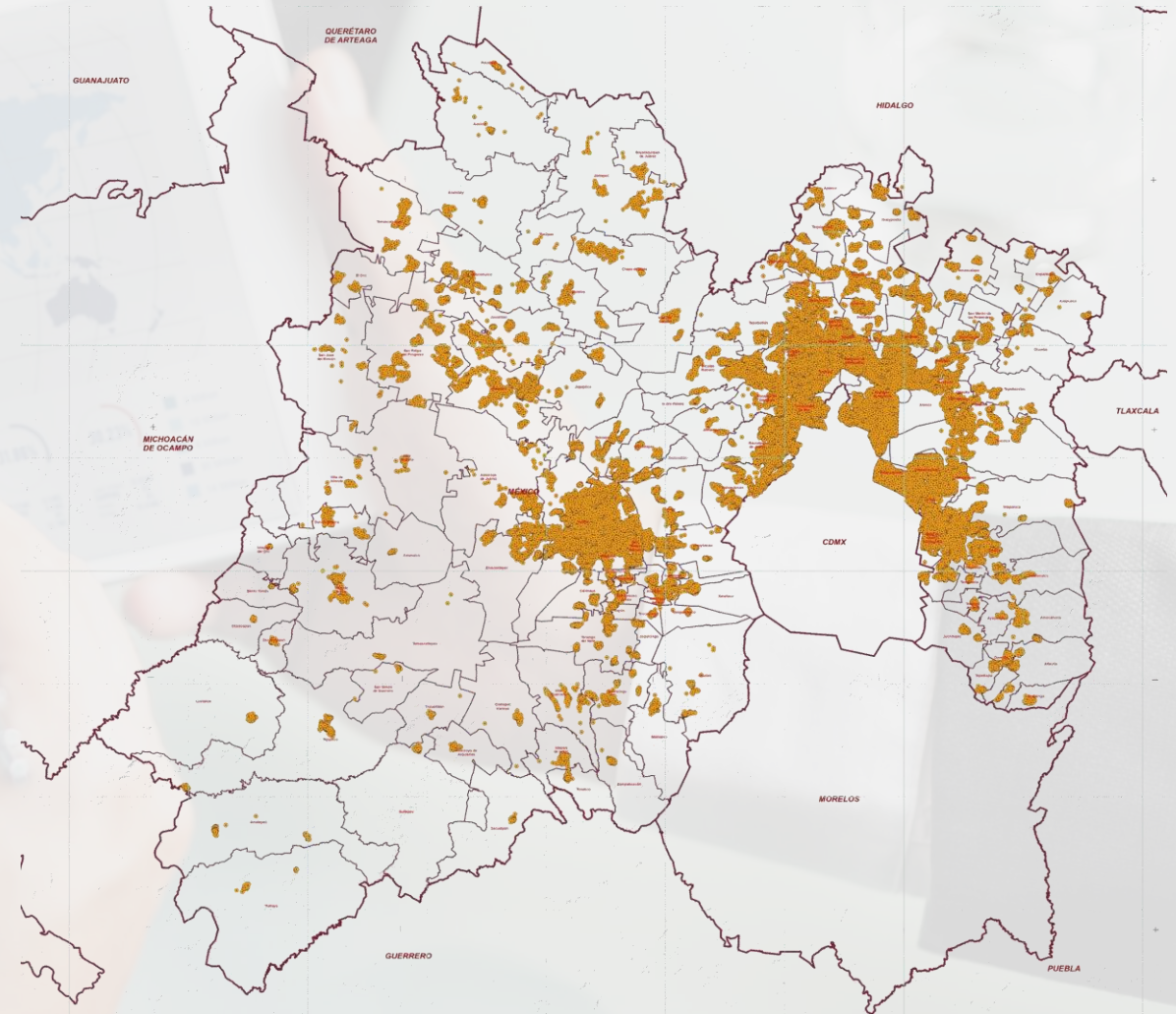
+1.8

million
employed
individuals

10.9%

of foreign direct
investment

Sources:
DENUE-INEGI, May 2024.
GDP-INEGI, 2022.
ENOE-INEGI, 2nd quarter of 2024.
Ministry of Economy, 2006 – 1st quarter of 2024.



● Economic units

Statal data

Main international logistics platform in Mexico

7.2%

of the state's GDP

2 thousand 761

economic units

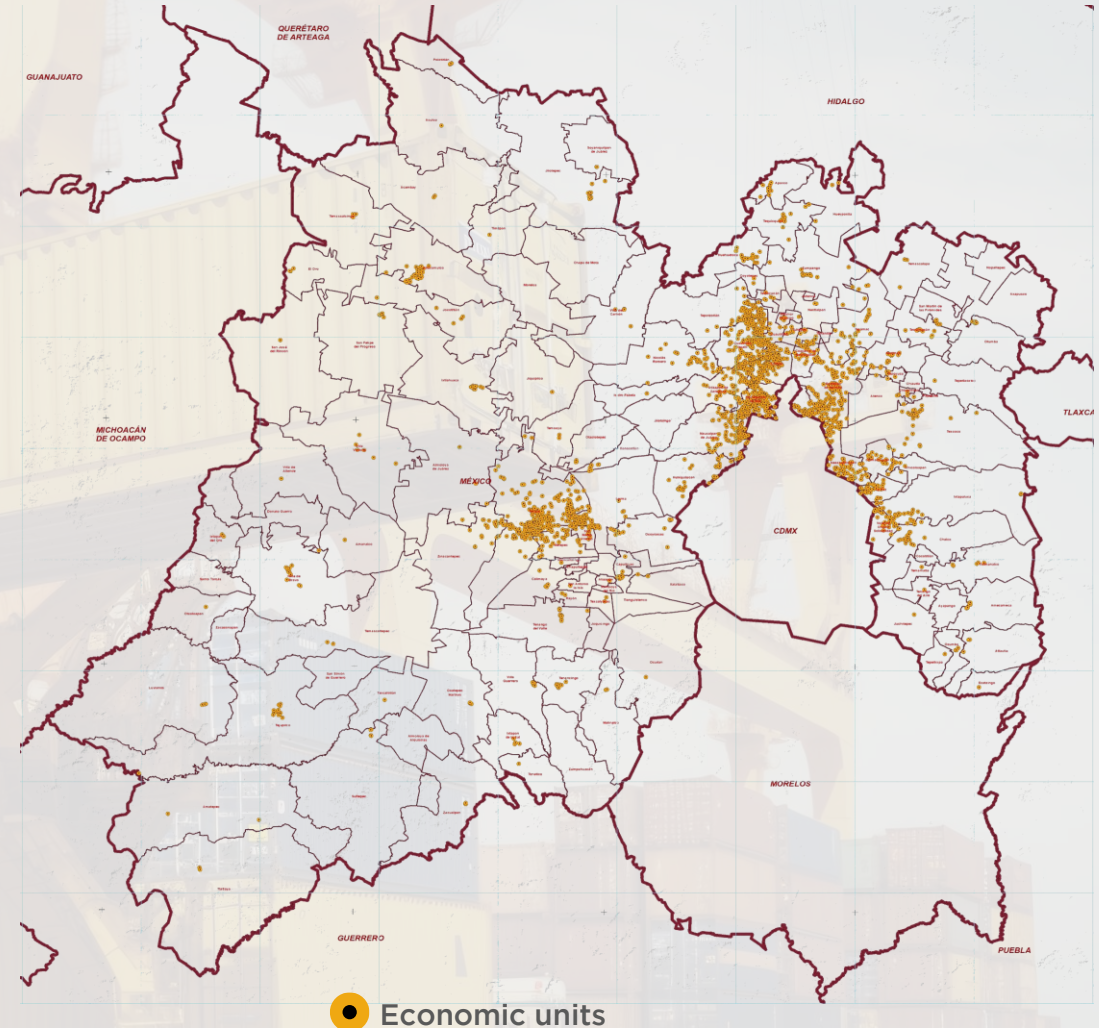
617 thousand 377

employed individuals

0.9%

of foreign direct investment

Distribution centers operating in the
entity



Sources:

-DENUE-INEGI, mayo 2024; PIB-INEGI, 2022.

ENOE-INEGI, 1° trimestre de 2024; Secretaría de Economía, 2006 – 1er trimestre de 2024

Financial Services

➤ National data

2° place
with 8 mil 753
economic units

3° place
with 6.9% of the
national GDP

➤ State data

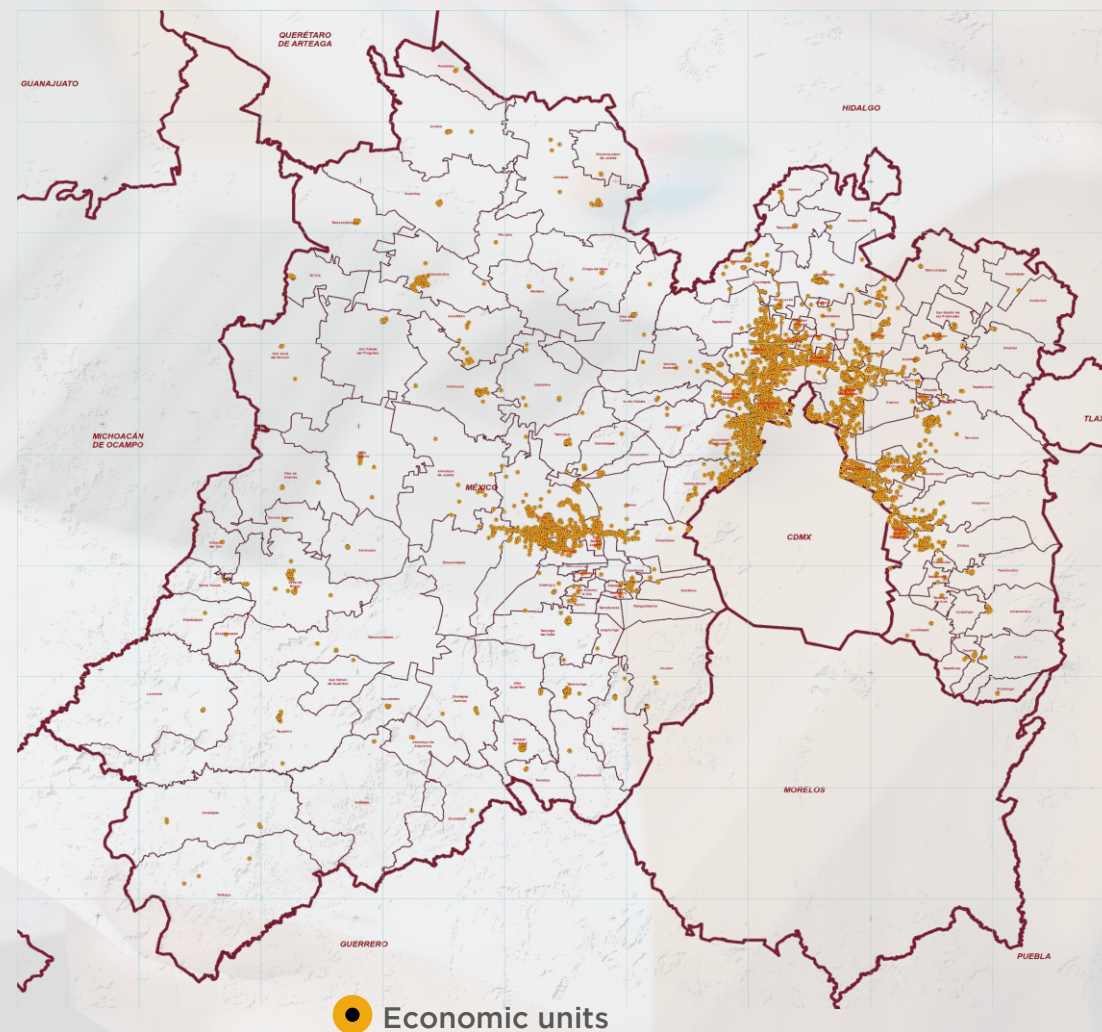
2.8%
of the state
economy

**18 thousand
975**
employed individuals

10.8%
of foreign direct
investment

Sources:

DENUE-INEGI, May 2024.
Economic Censuses of 2019.
Ministry of Economy, 2006 – 2nd quarter of 2024..



Real Estate Services

➤ National data

1° place

with 7 thousand
091 economic units

2° place

with 13.9% of the
national GDP

➤ Statal data

14.1%

of the state
economy

27 thousand

626

employed individuals

1.0%

of foreign direct
investment

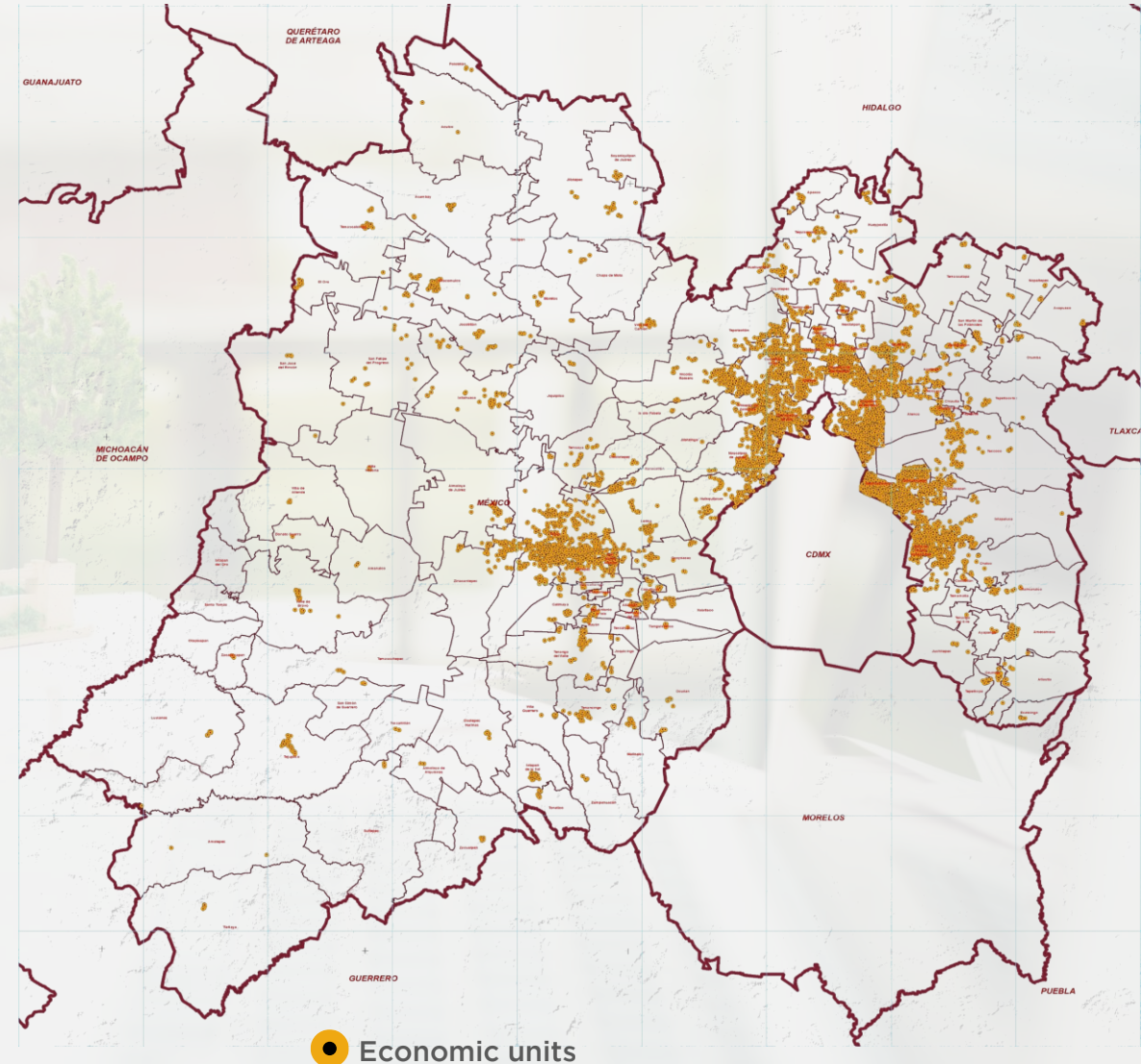
Sources:

DENUE-INEGI, May 2024.

GDP-INEGI, 2022.

Economic Censuses of 2019.

Ministry of Economy, 2006 – 1st quarter of 2024



Waste Management

➤ National data

1° place

with 12 thousand
395 economic
units

5° place

with 5.4% of the
national GDP

➤ Statal data

0.6%

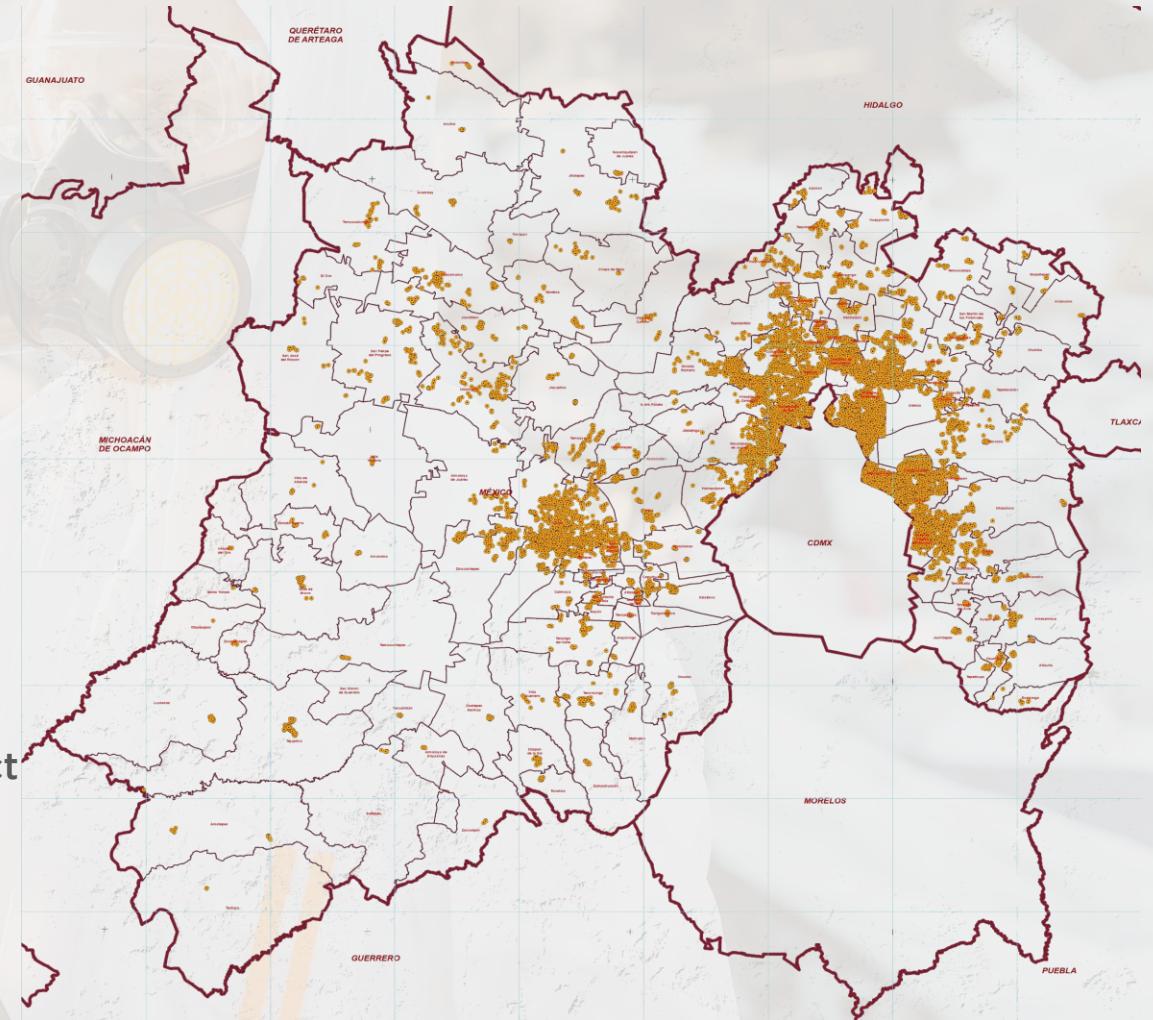
of the state
economy

151 mil 476

employed
individuals

0.1%

of foreign direct
investment



● Economic units

Sources:
DENUE-INEGI, May 2024.
GDP-INEGI, 2022.
Economic Censuses of 2019.
Ministry of Economy, 2006 – 1st quarter of 2024

Scientific and Technical Services

➤ National data

2° place

with 10 thousand
335 economic
units

4° place

with 5.6% of the
national GDP

➤ Statal data

1.2%

of the state's
production

51 mil 183

personas
ocupadas

0.3%

of foreign direct
investment

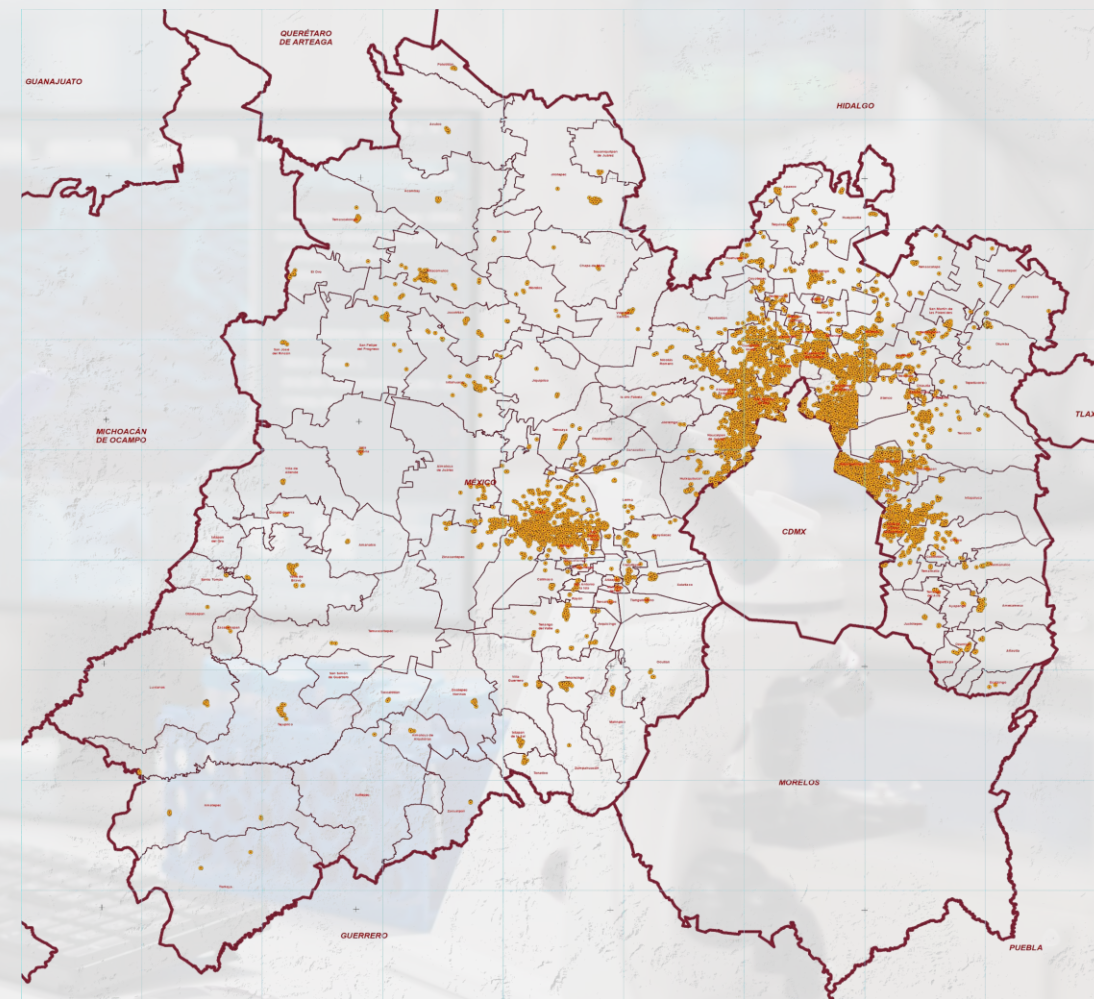
Sources:

DENUE-INEGI, May 2024.

GDP-INEGI, 2022.

Economic Censuses of 2019.

Ministry of Economy, 2006 – 1st quarter of 2024



● Economic units

Distribution and Supply Units

➤ Retail units

1° place

in grocery and
miscellaneous stores,
with, 88 thousand
615 (14.7%)

1° place

in supermarkets, with
706 (11%)

1° place

in department stores,
with, 330 (11.4%)

3° place

in supermarkets,
with, 3 thousand
534 (6.4%)

➤ Supply Centers (CEDAS)

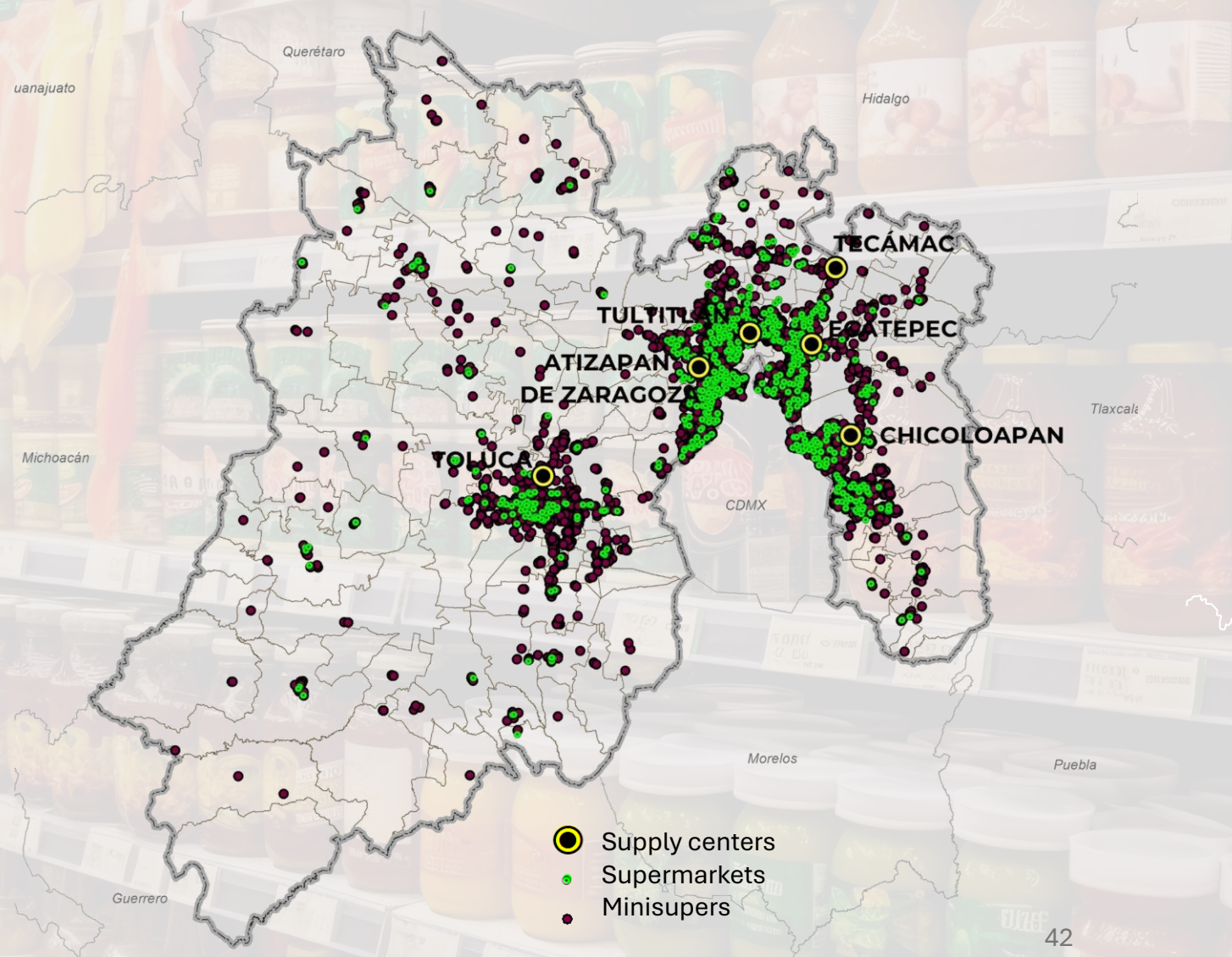
6 supply centers

Toluca, Ecatepec, Tultitlán, Atizapán de
Zaragoza, San Vicente Chicoloapan y Tecámac

- 1,821 warehouses
- 1,680 comercial permits

Sources:

-Dirección General de Comercio, Gobierno del Estado de México, 2023.
-DENUE-INEGI, 2022.



Distribution and Supply Units

Public Markets

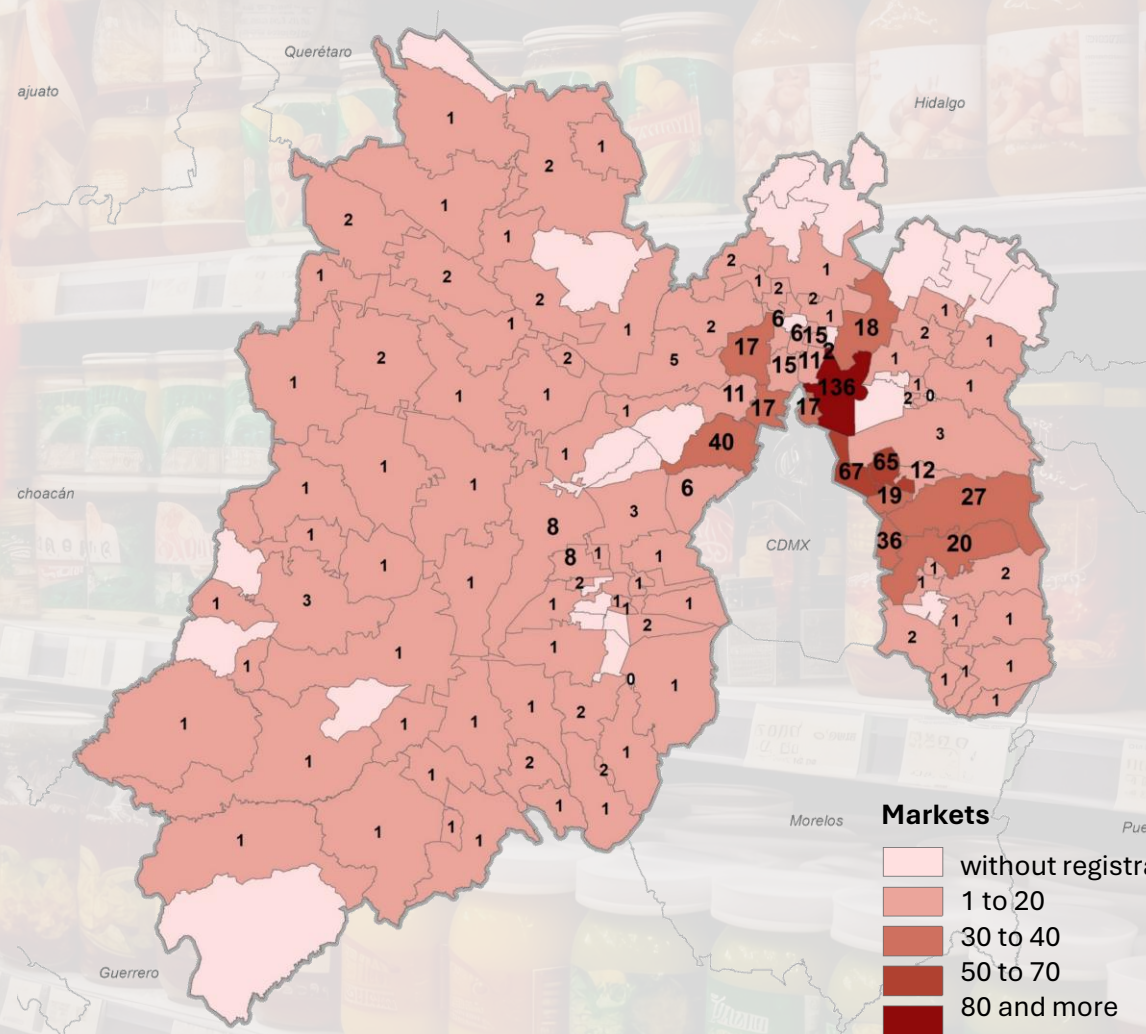
651
markets

- **509** municipalized
- **142** private

82 thousand 096
Comercial premises

Coverage
99 municipalities

59 thousand
620
tenants



Sources:

-Dirección General de Comercio, Gobierno del Estado de México, 2023.

Quality of life

Connectivity

2

international
airports

Source: Agencia Federal de Aviación Civil, 2024.

39

heliports

Source: Agencia Federal de Aviación Civil, 2024.

2

national
aerodromes

Source: Agencia Federal de Aviación Civil, 2024.

162

electric vehicle
charging points

in the central zone of Mexico (with CDMX)
Source: Electromaps, sep 2024.

Health

3 thousand 247

hospitals for
outpatient
consultation to
hospitalization

Source: Secretaría de Salud, CLUES 2023.

15 thousand 687

hospital beds

Source: Secretaría de Salud, Ene 2023.

306

units with
hospitalization

Source: Secretaría de Salud, Ene 2023.

11 thousand 565

pharmacies

Source: DENUE, 2024.

Recreation

22

golf courses

Source: Secretaría de Turismo, 2024.

6

sports stadiums of
national and regional
importance

Source: SEDECO.

401

theaters and spaces for
artistic, cultural, and
sports events

Source: DENUE-INEGI, 2023.

132

cinemas

Source: DENUE-INEGI, 2023.

394

shopping malls

Source: DGC, 2024.

» Nature

15+77

national and state
protected natural
areas

Source:
Sistema Nacional de Áreas Protegidas (SINAP), 2024.
Secretaría del Medio Ambiente y Desarrollo Sostenible-
GEM, 2024.

10

parks for exploration and
hiking

Source: Secretaría de Turismo, 2024.

9

zoos and botanical
gardens

Source: Secretaría de Turismo, 2024.

» Historical-Cultural

4

UNESCO World
Heritage Sites

Source: Secretaría de Turismo, 2024.

19

archaeological
zones

Source: Secretaría de Turismo, 2024.

12+25

magical/charming
Towns

Source: Secretaría de Turismo, 2024.

92

museums

Source: Secretaría de Turismo, 2024.

Subsidies 2024

Nearshoring

» Subsidies Nearshoring 2024

¿What is Nearshoring?



It is the **relocation of companies seeking new investment horizons** to get closer to their target market.

Some of the **benefits** they obtain when relocating include:

- transportation costs
- production costs in the new country
- trade agreements
- Relationship between the host country and the destination country
- financial and political matters.

» Subsidies 2024

The Government of the State of Mexico, aiming to promote foreign investment and job creation, offers 2 subsidies to companies that relocate their employment sources to the State of Mexico:

- **ISERTP subsidy**

100% subsidy for 60 months (following the start of operations).

- **Ecological tax subsidy**

100% subsidy for 12 months (following the start of operations).

- ❖ Taxes on emissions of pollutants into the atmosphere.
- ❖ Ecological taxes on waste disposal, confinement, and storage.
- ❖ Taxes on emissions of pollutants into water.

➤ Subsidies Nearshoring 2024

Subsidies provides by the State of Mexico



Strengthen social and
economic development



Promote investment



Generate employment

About ISERTP

About ecological tax
subsidy

About lodging taxes



Subsidies tha remain at 100%

Those hiring workers:

- Aged 60 years or older.
- Newly incorporated into the labor market.
- Of indigenous origin.
- Released due to the Amnesty Law.
- Single mothers.



¡New! 100% to promote nearshoring

- Companies that relocate or start operations in the State of Mexico
- Companies that increase their workforce



¡New! 100% for vulnerable individuals

- Domestic workers
- Repatriated compatriots



¡New! 50% for companies that implement a Waste Management Plan



¡New! to promote Nearshoring



¡New! to promote tourism

To individuals with stays exceeding 15 consecutive days in the region

➤ Nearshoring Investment September 2023- August 2024

- In this period, **16 projects** have been identified with an amount of **3,522.96 MDD** that could be related to the **Nearshoring** phenomenon.
 - ❖ This represents **53.1%** of the investment amount of 6,631 MDD.

➤ Investment by country of origin

- Of the **3,522.96 MDD** raised by **Nearshoring** during the period from September 2023 to August 2024, **70.7%** came from the United States.
- The **remaining 29.3%, equivalent to 1,032.94 MDD, came from 5 countries:**

- ❖ Germany with 347.11 MDD (9.9%).
- ❖ France with 320 MDD (9.1%).
- ❖ Ireland with 300 MDD (8.5%).
- ❖ Japan with 53.84 MDD (1.5%).
- ❖ Sweden with 11.99 MDD (0.3%).

➤ Nearshoring Investment September 2023- August 2024

➤ Investment by Sector of Economic Activity

- Of the **3,522.96 MDD** raised by **Nearshoring** during the period from September 2023 to August 2024, **91.5%** was concentrated in three sectors;
 - ❖ Automotive with 2,421 MDD (68.7%).
 - ❖ Industrial park developments with 481 MDD (13.7%).
 - ❖ Energy with 320 MDD (9.1%).
 - ❖ Others with \$300 MDD (8.5%).

Annexes



Article 10.- Taxpayers obligated to pay the tax on expenditures for personal labor remuneration will enjoy a 100% subsidy under the following terms and conditions:

- I. For the 60 months following the generation of employment, hiring, relocation, or start of operations, as the case may be, for the following taxpayers:
 - a. Companies that relocate their sources of employment from any Federal Entity other than the State of Mexico to this Entity during the fiscal year 2024.
 - b. Taxpayers who begin operations with their source of employment and fiscal domicile in the State of Mexico during the Fiscal Year 2024.
 - c. Those who, during the Fiscal Year 2024, increase their workforce. In this case, the subsidy will consider the tax generated concerning the new positions, taking as a base the highest declared workforce during the Fiscal Year 2023. It will apply only to the jobs created during the Fiscal Year 2024, above the mentioned workforce, and that meet the conditions established for this purpose.

Article 20.- For Fiscal Year 2024, the subsidy on the payment of Ecological Taxes is authorized under the following terms:

- I. To taxpayers who start operations with their workplaces at their fiscal domicile in the State of Mexico, during Fiscal Year 2024, a 100% subsidy for the 12 months following the initiation on the tax of the Emission

The State of Mexico has it all

¡Thank you for your attention!

Contact:

Phone: 722 275 81 00

Email: sedeco@edomex.gob.mx

Web site: <https://desarrolloeconomico.edomex.gob.mx/>

X: @SedecoEdomex

Facebook: Secretaría de Desarrollo Económico del Estado de México

